

 **guidely**

## Special Bundle PDF Course for SBI Clerk & IBPS RRB PO Mains Exams 2021

Course Duration: **50 days**  
No. of Ques: **5000**



- ✓ Language: English & Hindi
- ✓ Purely Based on Exact Exam Level & New Pattern
- ✓ Exact Exam Level Questions
- ✓ Answer key with Video Solution

~~₹799~~

**₹399**

**Buy Now**

## Grand Bundle PDF Course 2021

### Exams Covered:

**SBI Clerk | SBI PO | IBPS RRB PO |  
IBPS RRB Clerk | IBPS PO | IBPS Clerk**

### Seperate PDF Course for All Major Bank pre + Mains Exams

- Total No. of Ques: **40,000+**
- Question in Bilingual (Eng & Hindi)
- Answers With Detailed **Video Solution**
- Provides you **50 days Study Planner** for each exams
- **Covers All Types** of Questions in Each Topic
- Questions in **Exact Exam Level**
- All Our PDFs are **Downloadable**
- **100% Satisfaction** Assured & It's Worthy for your money
- Download as PDF & also take **Quiz with Timer**

 **guidely**

**Grab It Now**

## SBI Clerk Mains 2020 Memory Based Paper – English Version

### Reasoning Ability

**Directions (1-5):** Answer the questions based on the information given below.

Eight persons are seated in a square table where four of them sit at the corners and faces towards the centre and four of them sit at the middle of the sides and faces away from the centre. All the persons are shifted to the rooms X and Y based on a rolling die and then arranged in a parallel row as follows.

#### Arrangement 1:

Only two persons sit between M and C, who sits facing towards the centre. A sits to the immediate right of M. O sits third to the left of A. U sits second to the right of O. G sits adjacent to A and third to the right of E. R is one of the persons.

#### Arrangement 2:

All the persons (in alphabetical order) are allowed to roll the die. The persons getting even number are shifted to room X whereas the persons getting odd number are shifted to room Y. Thus four persons are there in each room. The following is the number shown in the die (in the same order) for each person (in alphabetical order): 4, 3, 5, 6, 2, 1, 5, 4.

#### Arrangement 3:

All the persons are made to sit in two parallel rows in alphabetical order from left to right facing

towards north. The persons from room X sits in row 1 whereas the persons from room Y sits in row 2. The persons in row 2 sit exactly behind the persons in row 1.

**1. Who among the following person sits third to the left of M in arrangement 1?**

- a) C
- b) U
- c) E
- d) R
- e) None of these

**2. Who among the following person is replaced by C, if C, G, M, U are shifted to the room X in arrangement 2?**

- a) O
- b) A
- c) R
- d) E
- e) None of these

**3. Who among the following person sits exactly in front of R in the arrangement 3?**

- a) U
- b) M
- c) G
- d) O
- e) None of these

**4. What is the position of R with respect to A in arrangement 1?**

- a) Second to the left

## SBI Clerk Mains 2020 Memory Based Paper – English Version

- b) Immediate left
- c) Immediate right
- d) Second to the right
- e) None of these

5. Four of the following five are alike in a certain way based on the arrangement 1 and hence form a group. Find the one who doesn't belong to that group?

- a) C
- b) R
- c) E
- d) A
- e) G

**Directions (6-10): Answer the questions based on the information given below.**

Six persons viz. A, B, C, D, E and F from the same family are standing in a straight line facing towards north, but not necessarily in the same order. There are two married couples and two generations in the family. Also, equal number of males and females are there in the family.

B stands third from one of the extreme ends and is second to the left of his mother. B is the son of D and brother of A who stands to the immediate right of B. C stands second to the left of A and immediate right of the one who is the child of E. E is the father of A and stands to the left of his wife. F is neither the son nor the wife of E. C is

the daughter-in-law of D whereas B is unmarried.

6. Who among the following is the spouse of C?

- a) B
- b) A
- c) F
- d) E
- e) Cannot be determined

7. Who among the following person stands to the immediate left of F?

- a) D
- b) A
- c) E
- d) C
- e) No one or none of these

8. How many persons stand between D and his spouse?

- a) One
- b) Three
- c) None
- d) Two
- e) More than three

9. If G is the daughter of C, then how is F related to G?

- a) Aunt
- b) Grandfather
- c) Uncle
- d) Grandmother

## SBI Clerk Mains 2020 Memory Based Paper – English Version

e) Cannot be determined

**10. What will be the position of F with respect to her mother?**

- a) Third to the left
- b) Second to the left
- c) Immediate right
- d) Fourth to the left
- e) None of these

**Directions (11-15): Answer the questions based on the information given below.**

Twelve persons i.e. A, B, C, D, E, F, P, Q, R, S, T and V are seated in two parallel rows, seven seats in each row, but not necessarily in the same order. The persons in both the rows are facing towards each other and one of the seats in each row is vacant. The persons in row 1 faces towards north while the persons in row 2 faces towards south.

B sits third from one of the extreme ends and sits to the immediate right of the vacant seat. More than two persons sit to the right of B. The one who sits exactly opposite to the vacant seat, sits second to the right of B. Both R and Q sit adjacent to the vacant seat of the same row where neither of them is adjacent to A. Only two persons sit between E and A, who doesn't sit at any of the ends. At least one person sits to the left of E. S sits second to the right of R. F faces north and sits second to the left of the one who

faces V. A does not face Q. Neither R nor A is adjacent to V. More than three seats are between C and D who sits at the extreme end. Only one person sits between T and P who doesn't face D.

**11. Who among the following person sits facing the vacant seat?**

- a) T
- b) P
- c) V
- d) F
- e) None of these

**12. How many persons sit between Q and the one who faces D?**

- a) One
- b) Two
- c) Three
- d) More than three
- e) None

**13. What is the position of P with respect to A?**

- a) Immediate right
- b) Second to the right
- c) Immediate left
- d) Faces each other
- e) None of these

**14. The number of persons to the right of V is the same as the number of persons to the left of \_\_\_\_.**

- a) E

## SBI Clerk Mains 2020 Memory Based Paper – English Version

- b) D
- c) S
- d) C
- e) None of these

15. Who among the following person sits second to the right of the one who faces R?

- a) E
- b) F
- c) C
- d) A
- e) None of these

**Directions (16-20):** Answer the questions based on the information given below.

An alphanumeric machine when given an input rearranges them by following a particular rule in each step. The following is an illustration of the input and the steps rearrangement.

**Input:** Land 73 59 Tent 35 Shut Born 67 Find 91

**Step 1:** 37 Land 73 59 Tent Born 67 Find 91 Shot

**Step 2:** B4rn 37 Land 73 Tent 67 Find 91 Shot 61

**Step 3:** 69 B4rn 37 Land 73 Tent 91 Shot 61 Fond

**Step 4:** T4nt 69 B4rn 37 Land 91 Shot 61 Fond 75

**Step 5:** 93 T4nt 69 B4rn 37 Shot 61 Fond 75 Lond

Step 5 is the last and final step of the rearrangement. With the same rules followed in the above arrangement, determine the steps for the following input.

**Input:** Thin 83 Bush 57 Jack

16. In which of the following step “83 Jack 75” occurs in the same order?

- a) Step 2
- b) Step 4
- c) Step 3
- d) Step 1
- e) Cannot be determined

17. How many elements are there between 43 and 59 in step 4?

- a) Three
- b) Four
- c) Seven
- d) Six
- e) None of these

18. Which of the following element is fourth to the right of 59 in step 3?

- a) 83
- b) Jack
- c) 75
- d) Rest
- e) None of these

19. What will be the difference of the sum of the third and fifth element from the right end in step 1 and the sum of the third and fourth element from the left end in step 3?

- a) 10
- b) 6
- c) 9

**SBI Clerk Mains 2020 Memory Based Paper – English Version**

- d) 8  
e) None of these

**20. Which of the following option is correct with respect to step 5 of the given input?**

- a) R♦st 59 Gr¥w 25 B◇sh 43  
b) R♦st 59 Gr¥w 25 Jøck 83  
c) 85 R♦st 59 Jøck 25 Gr¥w  
d) 85 Jøck 59 Th●n 25 B◇sh  
e) None of these

**Directions (21-25): Answer the questions based on the information given below.**

Ten persons viz. G, J, K, M, P, Q, R, S, T and W are visiting a place in different months viz. January, February, April, May, June, July, August, September, November and December of the same year, but not necessarily in the same order.

R visits the place in one of the months having 31 days after May. Only four persons visit between R and G who visits immediately before P. W visits three persons after the one who visits second after P. Only one person visits between W and M who doesn't visit before R. Q visits after W. J visits in the month having 30 days and immediately after T. K visits before S who neither visits after W nor M.

**21. Who among the following visits the places three persons after S?**

- a) M  
b) Q  
c) P  
d) No such person  
e) None of these

**22. In which of the following month does K visits the place?**

- a) February  
b) April  
c) May  
d) January  
e) None of these

**23. If W and T interchange their visiting month, then who among the following person visits two persons after T?**

- a) M  
b) S  
c) R  
d) Q  
e) None of these

**24. Four of the following five are alike in a certain way and hence form a group. Find the one who doesn't belong to that group.**

- a) M  
b) T  
c) P  
d) S  
e) K

**25. How many persons visit between W and P?**

**SBI Clerk Mains 2020 Memory Based Paper – English Version**

- a) One
- b) Two
- c) Three
- d) None
- e) More than three

**Directions (26-30): Answer the questions based on the information given below.**

Seven persons viz. A, B, C, D, E, F and G were born in different years viz. 1960, 1965, 1977, 1989, 1995, 2007 and 2010, but not necessarily in the same order. Each person likes different colours viz. Blue, Green, Indigo, Orange, Red, Violet and Yellow. Ages of all the persons were calculated on the base year 2020.

F's age was an even number and likes Indigo. The difference between the ages of C and F is less than 6. The number of persons born before and after the one who likes Yellow is the same. Only one person was born between the one who likes Yellow and B, who likes Violet. The one who likes Green was born immediately before B. The age of E is a prime number but doesn't like Yellow. A likes Red colour whereas C doesn't like Blue. The age difference between G and E is double the value of the age difference between G and A.

**26. Who among the following was the eldest person among them?**

- a) F
- b) C
- c) D
- d) G
- e) None of these

**27. What is the age of A?**

- a) 10
- b) 25
- c) 13
- d) 31
- e) None of these

**28. Which of the following colour was liked by C?**

- a) Violet
- b) Blue
- c) Indigo
- d) Orange
- e) None of these

**29. How many persons were born between B and the one who likes Blue?**

- a) Two
- b) Three
- c) One
- d) More than three
- e) None

**30. What is the age difference between the one who was born in 1977 and the one who likes Indigo?**

- a) 33

## SBI Clerk Mains 2020 Memory Based Paper – English Version

- b) 30
- c) 17
- d) 18
- e) None of these

**Directions (31-35):** Read the following information carefully and answer the questions given below.

Letts	F	I	D	G	K	P	O	T	M	A	Y	N	R	E
Codes	5	#	4	3	1	%	7	2	&	8	*	\$	+	!

**Conditions:**

I. If the first letter of the first word in the sentence is a vowel and is followed by a word which also starts with a vowel then the code of the first letter of both the words is code of the vowel of the first word.

II. If in a sentence, a word has repeated letters then the repeated letters are coded as @.

III. If the last letter of the last word is a vowel and the first letter of the first word is a consonant, then both the letters of the words are coded as the code of the first letter of the first word.

**Note:** If more than one condition is applied, then it is applied in the same order from I to III. The

letter is decoded by one condition then it does not consider for the other conditions.

**31. What will be the code for the phrase "FINE GOOD DAY"?**

- a) 5\$!# 3@@3 48\*
- b) 5# \$! 3@@4 48\*
- c) # \$!5 3@@4 84\*
- d) 5# \$! 4@@3 48\*
- e) None of these

**32. What will be the code for the phrase "INTO DARK"?**

- a) # \$27 48+1
- b) 27# \$ 48+1
- c) 7# \$2 481+
- d) 2# \$7 84+1
- e) None of these

**33. What will be the code for the phrase "ROOM RATE"?**

- a) +@@+ +82+
- b) @++@ 82++
- c) @+@+ +82+
- d) +@@& +82+
- e) None of these

**34. What will be the code for the phrase "MY PINE TREE"?**

- a) @\* %#\$! 2+@@@
- b) @\* %#\$! 2+@&
- c) &\* %#\$! 2+@&

## SBI Clerk Mains 2020 Memory Based Paper – English Version

d) &\* %#\$! 2+@@

e) None of these

**35. Find the code for the phrase “ENTERANY FORMATE”.**

a) !\$2!+ 8\$\* 57+&82!

b) !\$2!+ !\$\* 57+&82!

c) 8\$2!+ 8\$\* 57+&82!

d) 8\$2!+ !\$\* 57+&82!

e) None of these

**Directions (36-40): Answer the questions based on the information given below.**

E 6 D # B 8 7 J 4 % G 0 F 9 C S & V \* P W 1 @  
3 N \$ R 2 ! Y M 5 ^

**Step 1:** The letter immediately preceded by a symbol and immediately followed by a number is changed to the second succeeding letter in the English alphabets.

**Step 2:** The numbers immediately following letter and immediately preceding symbol is added with three.

**Step 3:** If any letter is repeated, then replace the repeated letter with the third succeeding letter in English alphabets (if A comes twice then first “A” will remain same and the second repeated “A” will be replaced by third succeeding letter). Also, if any number is repeated, then remove the number from the series. (if 9 comes twice then first “9” will remain same and the second repeated “9” will be removed)

**Note:** Step 1 is followed by step 2, step 2 is followed by step 3.

**36. How many letters are immediately preceded by a number and immediately followed by a symbol in the final series (i.e. step 3)?**

a) One

b) Two

c) None

d) Three

e) More than three

**37. Which of the following element is seventh to the right of the sixteenth from the left end in the final series?**

a) @

b) N

c) 3

d) 1

e) None of these

**38. How many numbers are there between the fourth element from the left end and eleventh element from the right end in the final series?**

a) None

b) One

c) Two

d) Three

e) More than three

**39. If all the symbols are dropped from the final series, then which of the following element is thirteenth from the right end?**

## SBI Clerk Mains 2020 Memory Based Paper – English Version

- a) 9
- b) C
- c) F
- d) 0
- e) None of these

**40. What is the position of the first symbol towards the left of 4 in the final series?**

- a) Immediate next
- b) Second from 4
- c) Third from 4
- d) Fourth from 4
- e) None of these

**41) If the third letter from the left end of all the words is taken after arranging the letters of each word in alphabetical order within the word, which of the following options has the maximum number of consonants?**

- a) Abroad, Accept, Active
- b) Battle, Beauty, Become
- c) Center, caught, Cancer
- d) Danger, Defeat, Degree
- e) Engine, Ending, Employ

**42) If the middle letters of all the words are taken, which of the following will form a meaningful word and each letter used only once?**

- a) Actor, Drawn, Event, Women
- b) Brain, Bring, Badly, Later
- c) Click, Clear, Cover, Gross

d) Broad, Event, Alive, Anger

e) Field, Above, Hotel, fixed

**43) If the second letters from the right end of all the words are taken after arranging the letters of each word in reverse alphabetical order within the word, which of the following options has the none vowel?**

- a) Bath, Area, Back, Coal
- b) Date, Came, Good, Ford
- c) Hang, Held, Item, King
- d) Made, Meal, Pain, Rock
- e) None of these

**44) If the letters of all the words are changed to the next successive letter in alphabetical order, then which of the following options has the maximum number of vowels obtained?**

- a) Art, Ask, Bet, Big
- b) Box, Bug, Cow, Dip
- c) Eye, Guy, Hit, Hot
- d) Map, Met, Mug, Oil
- e) Pin, Red, Row, Say

**45) If the vowels are changed to the next successive letter and the consonants are changed to the previous letter of all the words in alphabetical order, then which of the following options has the last letter of the word is a vowel?**

- a) Ability, Billion, Capture
- b) Circuit, Cloths, college
- c) Culture, Excited, Factory

**SBI Clerk Mains 2020 Memory Based Paper – English Version**

d) Forever, Gateway, Justify

e) None of the above

**Direction (46-50): Answer the questions based on the information given below.**

Seven persons P, Q, R, S, T, U and V live on seven floored building. The first floor is numbered as 1 the floor just above it is numbered as 2 and so on till the topmost floor is numbered as 7. All of them like different colours.

**Note: No two persons live on adjacent floors according to the English alphabetical order. For example-P does not live adjacent to Q, Q does not live adjacent to R and P and so on.**

The number of persons who live below as well as above U is the same. Only two persons live between U and the one who likes blue. Only one person lives between the one who likes blue and S. More than two persons live between the one who likes red and S. T lives immediately above the one who likes red. The one who likes black lives immediately above the one who likes golden. The one who likes white lives on an even numbered floor immediately above V. Three persons live between P and T. S does not like black. P likes green. R lives above the one who likes yellow.

**46. How many persons live between T and R?**

a) One

b) Two

c) Three

d) Four

e) None of these

**47. Who among the following person likes yellow?**

a) Q

b) S

c) R

d) T

e) None of these

**48. Four of the following five are alike in a certain way and hence form a group, which of the following does not belong to that group?**

a) R-black

b) T-Red

c) U-golden

d) P-yellow

e) S- black

**49. Who among the following person lives at the topmost floor?**

a) The one who likes white

b) T

c) R

d) The one who likes red

e) None of these

**50. What is the position of U from the bottom most?**

a) Third

## SBI Clerk Mains 2020 Memory Based Paper – English Version

- b) Second
- c) Fourth
- d) Fifth
- e) None of these

### Quantitative Aptitude

**Directions (51-54):** Read the following information carefully and answer the questions based on it.

In the year 2020 there were 3 classes 8<sup>th</sup>, 9<sup>th</sup> and 10<sup>th</sup> in a school which boys and girls study. Number of boys in 9<sup>th</sup> class was 20% more than that of 8<sup>th</sup> class. Number of girls in 9<sup>th</sup> class was 50% more than that of 10<sup>th</sup> class. The sum of total number of boys in 8<sup>th</sup> and 9<sup>th</sup> class and total number of girls in 9<sup>th</sup> and 10<sup>th</sup> class is equal to 128. Sum of boys in 8<sup>th</sup> class and girls in 10<sup>th</sup> class is 56. The number of Boys in 10<sup>th</sup> class is 17 more than the number of girls in 8<sup>th</sup> class. Total students in all three classes are 181.

**51.** If in class 11<sup>th</sup> of the same school, the number of boys is 80% of that in class 10<sup>th</sup> and it is known that 75% of the number of boys in class 11<sup>th</sup> is equal to 50% of the number of girls in class 11<sup>th</sup>. Find the number of girls in class 11<sup>th</sup> is what percent of the total students in the same class.

- a) 45%
- b) 70%
- c) 50%
- d) 40%
- e) 60%

**52.** On a certain day in 2020, 25% of the total students in class 11<sup>th</sup> of that school were absent. The ratio of boys to girls present is 11:19. The total number of girls enrolled in class 11<sup>th</sup> is 65. The number of boys who were absent is 14 more than that of girls. Then the number of students in class 11<sup>th</sup> is what percent more or less than the number of students in class 8<sup>th</sup> and 9<sup>th</sup> combined?

- a) 7.69%
- b) 6.25%
- c) 8.33%
- d) 9.09%
- e) None of these

**53.** The number of boys in class 8<sup>th</sup> in 2020 was 16.67% less than the boys in class 7<sup>th</sup> in 2019. Out of all the students who appeared for the final exam in the year 2019 from class 7<sup>th</sup>, 75% passed and got promoted. In 2020, class 8<sup>th</sup> had some new admission. If the girls who took admission in 8<sup>th</sup> in 2020 was 75% of the boys who took new admission. Then find the difference between the number of girls appearing in the final exam of class 7<sup>th</sup> in 2019 and girls in class 10<sup>th</sup> in 2020.

- a) 14
- b) 13
- c) 17
- d) Can't be determined
- e) 12

**54.** If in 2020, in class 10<sup>th</sup> some students did not attend final exams due to covid19, number

**SBI Clerk Mains 2020 Memory Based Paper – English Version**

of students passed the final exam is 11 less than the total students attended the exam in that class. If number of boys who didn't attend final exam is 20%, which is 75% more than number of girls who didn't attend final exam, then find the total number of girls in class 11<sup>th</sup> in 2021 if no other admission has done.

- a) 18
- b) 15
- c) 12
- d) 10
- e) 8

**Directions (55-57):** Read the following information carefully and answer the questions based on it.

There are total 350 students who like three different fruits apple, orange and grapes. Each students compulsorily like one or more than one fruit. The number of students liking only apple, only orange and only grapes is 18%, 6% and 12% respectively of total number of students. Students who like apple and orange but not grapes are  $x\%$ , those like only orange and grapes not apple are  $y\%$  and those like grapes and apple but not orange are  $z\%$  of total no. of students. Also it is known that the value of  $x$ ,  $y$ ,  $z$  are distinct integral multiple of 10. Based on this information, solve the questions below.

55. Find the number of students liking all three fruits

- a) 28
- b) 21
- c) 14

- d) 20
- e) 16

56. Find the maximum value of  $X$  i.e students liking apple and orange but not grapes?

- a) 30%
- b) 20%
- c) 40%
- d) 50%
- e) 25%

57. If number of students like orange and grapes but not apple is minimum, also number of students like apple and grapes but not orange is 50% more than number of students like only apple and orange but not grapes, then find the difference between number of students like only apple and orange but not grapes and the number of students like at least 2 fruits?

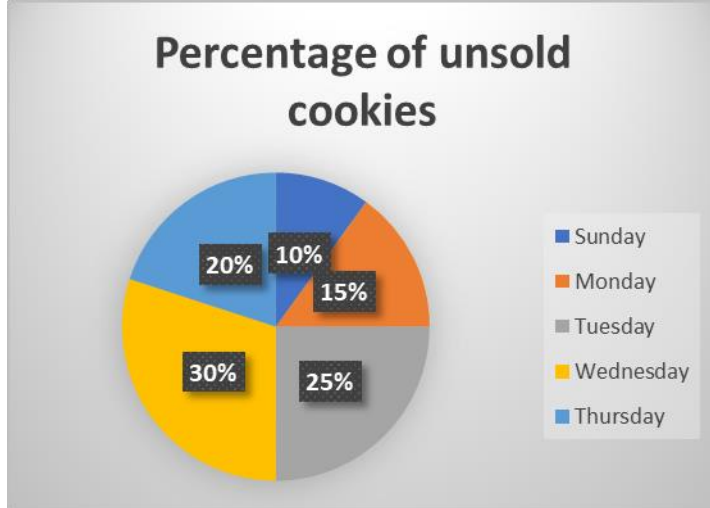
- a) 143
- b) 121
- c) 132
- d) 154
- e) 176

**Directions (58-60):** Read the following information carefully and answer the questions based on it.

The pie-chart given below shows the distribution of total unsold cookies of ABC bakery on 5 days of the week. It is also known that 200 cookies are baked daily in the bakery for selling purpose. All the unsold cookies of a particular day is sold next day. On Sunday there was no unsold

cookies that were carry forwarded from Saturday.

Total unsold cookies 180



58. The bakery sold  $\frac{9}{14}$  of total cookies sold on Tuesday at Rs.X each and rest of the cookies at Rs.Y each and ratio of X and Y is 2:3. If he received total amount of Rs.1716 after selling all the cookies. Then find the amount received by selling cookies at Rs.X?

- a) Rs.954
- b) Rs.918
- c) Rs.936
- d) Rs.972
- e) None of these

59. Given that the average number of cookies baked on Monday and Friday is 220. Ratio of total baked cookies and unsold cookies on Friday is 6:1, find the percentage of cookies sold on Friday. (Consider unsold cookies of Thursday to be carry forwarded to Friday)

- a) 66.67%
- b) 83.33%
- c) 75%
- d) 80%

e) 77.77%

60. On Sunday, 45% of the cookies baked were chocolate based, 25% cookies baked were almond based and rest was fruit cake based. If ratio of unsold cookies of chocolate, fruit cake and almond based is 2:1:3, then find the number of fruit based cookies sold on Sunday.

- a) 44
- b) 47
- c) 54
- d) 51
- e) 57

Directions (61-62): Read the following information carefully and answer the questions based on it.

Below data gives information about the percentage of profit generated by three sellers X,Y and Z on selling 5 articles namely A1, A2, A3, A4 and A5 whose cost price is Rs.100 each.

Note :

- i) The percentage of profit generated by X is 82%
- ii) The average % of profit earned by Y and Z together is 75%, which is 10 percentage points more than the profit percentage of Y

61. Profit (in Rs) earned by seller Z by selling  $A_3+A_4+A_2$  and  $A_1+A_5$  is in the ratio of 13:4. If Profit earned by selling A1 is 25 more than the profit earned by selling A5, then what is the percentage profit on A5?

- a) 32.5%
- b) 37.5%

## SBI Clerk Mains 2020 Memory Based Paper – English Version

- c) 33.33%  
 d) 30%  
 e) 36.66%

62. If the profit earned by X on articles A1, A3, and A5 (in the same order) is in arithmetic progression with common difference of Rs.10 and profit earned by X in A2 is Rs.85 then find the profit percentage earned by X by selling A4.

- a) 70%  
 b) 75%  
 c) 78%  
 d) 80%  
 e) Can't be determined

**Directions (63-64):** Read the following information carefully and answer the questions based on it.

Data given here is about percentage of marks scored by A,B,C in five subjects namely S1, S2, S3, S4 and S5.

Percentage of marks scored by A, B,C in all subjects are 86, 78, 82 respectively.

**Note:** Maximum marks in each subject is 100

63. Average marks scored by A in S1, S2 and S3 is 84 and A's score in subject S4 is 10 more than that in S5, then find the marks scored by A in S5?

- a) 94  
 b) 96  
 c) 74  
 d) 84  
 e) 92

64. B scored 70% in subject S1 and B's score in subject S2 is 10 more than that in S3 while B's score in subject S3 is 10 more than that in S4, then what percentage of marks B scored in S5?

- a) 82%  
 b) 88%  
 c) 85%  
 d) 75%  
 e) Can't be determined

**Directions (65-67):** Read the following information carefully and answer the questions based on it.

Given table depicts the number of Doctors and Engineers in 6 cities X,Y,Z,A,B and C. Use the additional notes in order to answer the following questions

	City X	City Y	City Z	City A	City B	City C
No of doctors				110		
No. of Engineers	102					

**Note:**

- i) Doctors in city X and Engineers in city Z are same  
 ii) Doctors in city Y and Engineers in city A are 263 together  
 iii) Sum of the number of doctors and engineers in city B is 290, while that in city Y is 228.  
 iv) Number of doctors in city B is 60 more than number of engineers in same city

## SBI Clerk Mains 2020 Memory Based Paper – English Version

- v) Sum of number of doctors and engineers in cities C & Y is 496
- vi) Number of doctors in city C is 96
- vii) Number of engineers in city C are 100% more than that in city Y
- viii) Number of doctors in city X are 11 more than that in city Y
- ix) Number of doctors in city Y are 11 more than that in city Z

65. Find the average of total number of doctors in city X,Y,A,B together

- a) 155  
b) 140  
c) 145  
d) 135  
e) 130

66. If 30% of doctors from city A are cardiologists, 40% of engineers from city B are mechanical engineers, then find the difference between the sum of number of doctors (other than cardiologists) from city A and number of engineers (other than mechanical) from city B and number of engineers from city X,Y,C together.

- a) 212  
b) 210  
c) 224  
d) 204  
e) None of these

67. Find the difference between total number of engineers and total persons from city A,B,C together?

- a) 45  
b) 40  
c) 50  
d) 55  
e) 35

**Directions (68-70):** Read the following information carefully and answer the questions based on it.

Given data is about number of books contained in a library, books are either owned or issued by library.

Library	Number of books owned by library	Number of books issued by library
A	560	160
B	460	200
C	720	400
D	640	260

**Note:**

Books owned by library = Books issued by library + Number of books available in library

68. In library D, out of total books owned by library, 144 are in Urdu language, if 25% of number of books in Urdu language are issued by library, then number of none issued Urdu book is approximately what percentage of the book available in library D?

- a) 15.25%  
b) 28.42%  
c) 16.5%

**SBI Clerk Mains 2020 Memory Based Paper – English Version**

- d) 15.77%
- e) None of these

69. In library C, there are some quantitative aptitude books and reasoning books, if 20% of books removed and replaced by reasoning books, then the no. of quantitative aptitude books and the no. of reasoning books becomes equal, then find the number of quantitative aptitude books in the library.

- a) 288
- b) 270
- c) 252
- d) 216
- e) Can't be determined

70. If in another library E which has only two type of books English and Hindi, total number of books is 25% less than that of A. Number of books not issued by library E is 60 less than that of library D, if number of English books in the library E is 60 less than that of Hindi books, then find the number of Hindi books not issued by library E if it issued 40 English books?

- a) 140
- b) 160
- c) 180
- d) 120
- e) 200

**Directions (71-73):** Read the following information carefully and answer the questions based on it.

A,B,C are three cubes. Three cubes of P,Q,R of different measurement of sides are formed by cutting the sides of A,B,C respectively.

Side of P can be calculated by  $x^2-10x+25=0$ , and difference between side of A and P is 3cm

Side of Q can be determined by  $y^2-4y-12=0$  and difference between side of B and that of Q is 4cm

Side of R is calculated as  $z^2-8z+16=0$  and difference between side of C and that of R is 5cm

71. Find the numerical difference between volume of cube C and total surface area of cube P

- a) 512
- b) 549
- c) 569
- d) 579
- e) 729

72. Find the ratio of volume of cube Q and sum of the total surface area of cube A and R together(By taking the numerical value).

- a) 20:9
- b) 16:9
- c) 9:16
- d) 9:20
- e) None of these

73. Find the sum of the volume (in  $\text{cm}^3$ ) of all the cubes together

- a) 2646  $\text{cm}^3$
- b) 2442  $\text{cm}^3$
- c) 2546  $\text{cm}^3$

## SBI Clerk Mains 2020 Memory Based Paper – English Version

- d) 2424 cm<sup>3</sup>  
 e) None of the above

**Directions (74-76):** Read the following information carefully and answer the questions based on it.

The following table shows the number of IT and HR department employees in various years.

Company	Number of IT employees in 2018	Number of HR dept employees in 2018	Transfer from IT to HR in 2019	Total number of IT employees in 2019
A	30	25	6	28
B	40	35	10	39
C	50	40	6	54

**Note:**

No employees left in 2018 and No new employee joined in 2019

No employee transferred to HR or IT from any other departments and vice versa

74. If 25% of HR employees from company B in 2019 are Ph.d holders, then find the difference between Ph.d and non Ph.d employees in HR.

- a) 18  
 b) 12  
 c) 20  
 d) 16  
 e) 14

75. Ratio of male and female in HR from company A in 2018 and 2019 are 2:3 and 4:5

respectively. If 2 male employees shifted from HR to IT in 2019, then find how many male employees shifted from IT to HR in 2019?

- a) 2  
 b) 3  
 c) 4  
 d) 5  
 e) 0

76. If in 2019, total employees in IT from company D is  $\frac{2}{3}$ <sup>rd</sup> of employees of company C working in IT in 2019, total employees in HR from company D is 25% less than the no. of employees of company B working in HR in 2019.

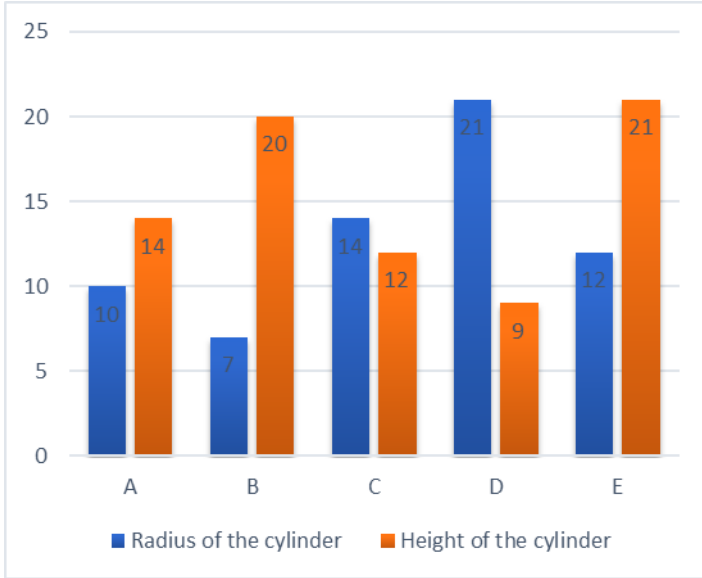
Find the total employees in company D in 2019?

- a) 45  
 b) 54  
 c) 63  
 d) 56  
 e) 60

**Directions (77-80):** Read the following information carefully and answer the questions based on it.

The following bar graph shows the radius (in cm) and height (in cm) of five different cylinders.

**SBI Clerk Mains 2020 Memory Based Paper – English Version**



77. By some cubes which side 2 cm is filled with cylinder A and cylinder B. Find the difference of number of cubes required to fill both the cylinders.

- a) 155
- b) 150
- c) 145
- d) 165
- e) None of these

78. If cylinder C is 40% filled with water and cylinder D is 80% filled with water, then find the difference between empty volumes (in  $\text{cm}^3$ ) of both cylinders.

- a) 1920.4  $\text{cm}^3$
- b) 1930.4  $\text{cm}^3$
- c) 1940.4  $\text{cm}^3$
- d) 1950.4  $\text{cm}^3$
- e) None of these

79. Difference between diameter and height of cylinder A is what percentage more or less than

difference between diameter and height of cylinder C?

- a) 62.5%
- b) 67.5%
- c) 60%
- d) 55.55%
- e) 65%

80. Find the sum of total surface area (approximately) of cylinder B and E?

- a) 3737  $\text{cm}^2$
- b) 3608  $\text{cm}^2$
- c) 3677  $\text{cm}^2$
- d) 3636  $\text{cm}^2$
- e) None of these

**English Language**

Directions (81-83): In the following questions, a part of a sentence is given in bold; it is then followed by four sentences which try to explain the meaning of the idiom/phrase given in bold. Choose the alternative from the four sentences given below each question which explains the meaning of the phrase correctly without altering the meaning of the sentence given as the question. If none of the statements explains the highlighted phrase, choose 'e' 'None of these' as the answer

**81)** We are used to giving benefit of doubt to the people we are closest to, the ones who we

## SBI Clerk Mains 2020 Memory Based Paper – English Version

know very well. This comes to us naturally as we know for a fact they are good people; and even more – we know they like / love us so they wouldn't do anything against us.

(a) Since we love and trust our close ones, we often tend to believe them, even when we are not sure what they are saying is true

(b) Given that we are very attached to our closed ones, we often try to hide their crimes and cover up for their lies

(c) Since humans are inherently doubting, there is a tendency to be specific about anyone

(d) Humans have nepotism ingrained in them, which means they would favour only their relatives over and above a fool proof evidence against them

(e) None of these

**82)** When the investigation began, it seemed that the investigating officer was out of his mind, but when he finished, we saw that there was a **method to his madness**.

(a) After the probe, we realized that he deliberately chose to be vague and absurd.

(b) Though his investigation appeared a little absurd in the beginning, we ultimately found out that he had a rational purpose behind it.

(c) There was a stark difference between what he started with and how he concluded his probe.

(d) Since he was not completely in his senses, he investigated in an awkward manner.

(e) None of these

**83)** I wouldn't be caught dead eating rolls on the roadside – it seems like stuffing your stomach with uncooked flour in the wrap.

(a) It is not good eating things that are bad for your health.

(b) Eating rolls can lead to death if a person is not careful about its cooking.

(c) Raman dislikes street rolls because he feels they are not properly cooked.

(d) Rolls can be harmful for health as they are made of uncooked flour.

(e) None of these

**Directions (84-87):** A passage with three blanks, followed by five options, each containing a word, is given. Choose the word that can fill all the three blanks

**84)** An \_\_\_\_\_ market is one where buyers and sellers enter competitive bids simultaneously. The price at which a stock trades represents the highest price that a buyer is willing to pay and the lowest price that a seller

## SBI Clerk Mains 2020 Memory Based Paper – English Version

is willing to accept. A double \_\_\_\_\_ market is when a buyer's price and a seller's asking price match, and the trade proceeds at that price. \_\_\_\_\_ markets do not involve direct negotiations between individual buyers and sellers, while negotiations occur for OTC trades.

- (a) Asset
- (b) Auction
- (c) Autarky
- (d) Arbitrage
- (e) Amortisation

**85)** \_\_\_\_\_ is issued by public authorities, credit institutions, companies and supranational institutions in the primary markets. The most common process for issuing \_\_\_\_\_ is through underwriting. When a \_\_\_\_\_ issue is underwritten, one or more securities firms or banks, forming a syndicate, buy the entire issue.

- (a) Brand
- (b) Stock
- (c) Bond
- (d) Barter
- (e) Bankruptcy

**86)** Emission \_\_\_\_\_ are the legal requirements governing air pollutants released into the atmosphere. Emission \_\_\_\_\_ set quantitative limits on the permissible amount of

specific air pollutants that may be released from specific sources over specific timeframes. They are generally designed to achieve air quality \_\_\_\_\_ and to protect human life. Different regions and countries have different standards for vehicle emissions.

- (a) Norms
- (b) Pollutants
- (c) Factors
- (d) Standards
- (e) Limits

**87)** Many of the important issues faced by modern society are the result of human \_\_\_\_\_ of the physical environment. Some of these \_\_\_\_\_ are intended and positive; others unintended and negative. These \_\_\_\_\_ have political, economic, and social implications at all scales, from the global to local.

- (a) Imprint
- (b) Manipulating
- (c) Pollutants
- (d) Modifications
- (e) Marginalized

**Directions (88-92):** In each of the following questions, a sentence has been given which is divided into parts. Two parts in each sentence

## SBI Clerk Mains 2020 Memory Based Paper – English Version

contain an error in it. Choose the option that contains the parts of the sentence with the error.

**88)** I. The carefully research essays in this fascinating book not only show how (A) the belligerents in World War I experimented with a combination of strategies—tax increases, (B) financial repression, inflation, debt rescheduling, selective default, and inter-governmental guarantees—to (C) address this political optimization problem, they show the long-run economic costs of those strategies.(D)

- (a) BD
- (b) BC
- (c) AD
- (d) AC
- (e) No error

**89)** Financial markets increasingly (A) recognize sustainable investing as (B) a new horizon that opens up enormous opportunities (C) ranging among transforming energy to reinventing protein. (D)

- (a) BD
- (b) AC
- (c) AB
- (d) BC
- (e) No error

**90)** Careful calibration of stress testing (A) to climate change will be needed, because such (B) testing require assessing the effects of shocks (C) or policy actions that may have little historical precedent.(D)

- (a) AB
- (b) AC
- (c) AD
- (d) BC
- (e) BD

**91)** In low-income countries, poor farm and fishing practices, (A) over-reliance on non-food crops, and climatic extremes (B) has put communities and biodiversity at great risk. Land clearing (C) leads to the destruction of native forests, soil erosion, and poor harvests. (D)

- (a) AC
- (b) AD
- (c) BD
- (d) BC
- (e) AB

**92)** Despite the drastic reduction in (A) commercial whaling, whales still face significant (B) life-threatening hazards, including ship strikes, entanglement (C) in fishing nets, waterborne plastic waste, and noise pollution. (D)

## SBI Clerk Mains 2020 Memory Based Paper – English Version

- (a) AB
- (b) BC
- (c) AD
- (d) BD
- (e) No Error

**Directions (93-99):** A passage is given below. Read the following carefully and answer the questions that follow

Cars seem to testify to the wealth of nations as much as of their individual owners. So it is that there are three cars to every four people in the US, while ownership in India still hovers around just one percent. We can however take heart from the fact that our automobile industry is now set for a quantum growth.

A **caveat**: this boom is going to take a high toll on our health and wealth. Every extra barrel of oil will make it harder and harder to breathe in our cities. Every \$1 rise in global oil prices will add at least \$425 million to India's import bill. So, strangely for a country that has lately been shedding its agricultural clothing. It is time for our crops to help out our motors.

Imagine that, moving all the goods and people in the country on indigenous oils, not without added benefits such as: generating jobs for

millions of workers, creating capitals on our farms, pumping up our treasury, retrenching our energy security, and setting up a brighter, greener future for our children.

While it is possible to extract bio-fuels from diverse crops such as sugar, corn and maize, Indians need to focus on a biofuel programme that best suits our environment. Advancing this position, Dilip Chenoy of the Society for Indian Automobiles Manufacturers, points out that the size and maturity of our industry does not permit adoption of all alternative technologies simultaneously. **Making a focused selection is \_\_\_\_\_.**

A hundred years ago, some sailors brought a strange and hardy weed called Jatropha to the Indians, who used it to make soap and medicinal oil, and to ward off pests and cattle from their crops.

**In recent years, researchers have show that the seeds of this humble plant, which can overcome bad soil and drought conditions, can be easily converted into a biodegradable diesel.** With half of India's land suffering from degradation. And 63 million hectares actually classified as wasteland, Jatropha plantations can help

## SBI Clerk Mains 2020 Memory Based Paper – English Version

reverse soil deterioration. And with every hectare generating 110 man-days of work a year, such plantations ought to make the locals happy as well.

The good green scent of Jatropha oil has also reached the board rooms. Daimler- Chrysler India has already completed road trials for biodiesel cars. Mahindra & Mahindra is set to launch its own commercial version. Tata's company buses have been running on it for a few years now, and Reliance has bought large tracts of land for Jatropha cultivation. These investments are in tune with a global corporate turn to bio-fuels that is tellingly being led by the world's biggest oil companies, including BP, Exxon Mobil and Shell. Better placed than most to evaluate exactly how fast the world is running out of fossil fuels, their increasing investment in biofuel R&D should be sending out a clarion call to national policy makers.

Back in the seventies, global shortages completely **eviscerated** Brazil's oil and foreign exchange reserves. After launching an alternative fuel programme on an emergency basis, the first ethanol regime of the world is now subsidy free and rolling in green petrodollars. Brazilians are filling up their tanks

at 30 percent less cost than folks elsewhere and even ethanol's waste is bringing them joy, delivering goodies ranging from fertilizer to power.

But it took three decades of painstakingly coordinating agriculture, industry and innovation for Brazil to find its powerhouse footing. Can India afford the same luxury? When he was still the CEO of Haliburton, that granddaddy of oilmen, Dick Cheney said that the world needs 50 million additional barrels by 2010. Combine this with demand outstripping supply by 3 million barrels a day by next year itself and oil shortages are just round the corner. Add on the second fastest growing motor industry in the world, and it's clear that India's investment in biofuels needs to be stepped-up to a war footing.

As the story shows, this is precisely what the long awaited National Biofuel Policy should do, comprehensively prepare for a new green revolution.

**93)** With half of India's land suffering from degradation and 63 million hectares actually classified as wasteland. Jatropha plantation can help reverse soil deterioration. Which of the

## SBI Clerk Mains 2020 Memory Based Paper – English Version

following statements is more appropriate as per your inference?

- (a) Half of India's land is lying waste.
- (b) Half of India's land is not fit for cultivation but is ideal for Jatropha cultivation.
- (c) The waste land is unproductive because of soil deterioration.
- (d) Land utilisation in our country is improper and unscientific.
- (e) Plantation of Jatropha will greatly help in soil erosion.

**94)** According to the content of the passage, which of the following statements is NOT correct?

- (a) Biofuel is obtained from selective crops of their waste material but we have to be selective in promoting their commercial cultivation.
- (b) Indigenous fuels will not generate jobs for workers but will retrench our existing energy resources.
- (c) The upsurge in producing cars at such a faster pace is likely to have adverse effects on our health and wealth.

(d) Ethanol which is extensively used in Brazil is also bio-fuel and its waste is used to produce fertilizer.

(e) Jatropha can be grown along with any other commercial crops but will not prove economically viable.

**95)** So strangely for a country that has lately been shedding its agricultural clothing, it is time for our crops to help our motors. What do you conceive from the said statement?

- (a) We have become self-sufficient in food grains in the past.
- (b) We should take up scientific cultivation and discard old methods of farming.
- (c) Use of land should not be restricted for growing food grains only.
- (d) Indians should change their mindset and start growing crops which are suited for obtaining bio-fuels to run our motors.
- (e) Generating bio-fuel resources will be more profitable than growing crops in the times to come.

**96)** The word 'eviscerated' in the passage has been used to imply.

- (a) Vitiate

## SBI Clerk Mains 2020 Memory Based Paper – English Version

- (b) destroy
- (c) deploy
- (d) demote
- (e) bracken

**97)** Which of the following will be an antonym to 'Caveat' as used in the passage?

- (a) Non-essential
- (b) Essential
- (c) Red-flags
- (d) Caution
- (e) Disinterested

**98)** Which of the following options will fill the blank given in the highlighted sentence to complete the sentence meaningfully?

- (a) Worthwhile
- (b) Essential
- (c) Superficial
- (d) Transforming
- (e) None of the above

**99)** Select the part which is erroneous in the sentence highlighted above?

- (a) In recent years, researchers have show that
- (b) the seeds of this humble plant, which
- (c) can overcome bad soil and drought
- (d) conditions, can be easily converted

- (e) into a biodegradable diesel.

**Directions (100-104):** Three paragraphs in each question have been given. You need to put the paragraphs in their proper sequence and select an option that represents the most appropriate arrangement

**100) A.** Yet restaurants in Little Rock, the state capital, are packed with diners, most of them unmasked. (The state's Republican governor, Asa Hutchinson, signed a law in April banning public institutions, but not private businesses, from requiring masks.) Customers chatter away inside air-conditioned restaurants, ignoring the patios outside.

**B.** Arkansas, like many other American states, is in the middle of another wave of the covid-19 pandemic. Its only health-sciences university hospital, the University of Arkansas for Medical Sciences (UAMS), is near capacity as it battles severe covid-19 infections, mostly among the unvaccinated. Across the state, covid-19 infections are worryingly high:

**C.** The positivity rate, the percentage of all tests that are positive for covid-19, is five times the national average, according to a UAMS report. And vaccination rates are low: only 41% among people aged 12 and older, compared with the nationwide average of 58%, the Arkansas

## SBI Clerk Mains 2020 Memory Based Paper – English Version

Department of Health said on July 27th. UAMS researchers describe the situation as “a raging forest fire”.

- (a) BAC
- (b) ABC
- (c) ACB
- (d) CAB
- (e) BCA

**101) A.** Mr Lawal says he hopes the Republic will one day become “a New York Times for Africa”. But in temperament it is more like the protest movement itself—youthful, tech-savvy and decentralised, its freelance writers touching on topics as diverse as modern slavery or the sexism of Fela Kuti, a revered musician.

**B.** Last October young Nigerians took to the streets to protest against police brutality. At first “none of the traditional media companies were covering it,” recalls Wale Lawal.

**C.** A few years earlier he had started the Republic, a quarterly magazine of ideas and analysis, and now his readers wanted to discuss the movement that was swelling around them. So he and his team in Lagos ran a series of online pieces on the protests, later collected in a special print edition. This kind of in-depth coverage of under-reported stories was “exactly what we were set up to do”.

- (a) CBA
- (b) CAB
- (c) BAC
- (d) BCA
- (e) ABC

**102) A.** Handicraft is about processing materials by hand with hand tools. The results can be helpful things or decorative things. The materials utilized in the product are natural, industrially processed or maybe recycled. The models of the product are ancient, revised, traditional or fashionable. Handicraft is deeply frozen in society and contributes to preserving and sending traditions.

**B.** In their product, crafters transfer an area of their cultural heritage in ideas, forms, materials and work ways, similarly as their own values, philosophy of life, fashion and self-image. Craftspeople, conjointly known as artisans, possess technical data of materials and work ways. They're skilled employees whose profession relies on manual skills. Their main tools are the power of work strategies and their manual skills.

**C.** Handicraft contains plenty of implicit data which grows every year, aboard with skills. The order and apprentice system has been widely

## SBI Clerk Mains 2020 Memory Based Paper – English Version

used to transfer skills and implicit data. Theme-based craft is a comprehensive, well-organized backline master of fascinating, supported the following in style five choose themes – Needle Work, tribal Crafts, fiber And Eco friendly Crafts, Fashion Accessories and festal Decorations providing in-depth info regarding the craft, products, sellers and awarded master craft persons in these particular crafts.

- (a) ACB
- (b) BAC
- (c) ABC
- (d) CBA
- (e) CAB

**103) A.** The religions that are prevalent in the country are Hinduism, Christianity, Islam, Sikhism, Buddhism, and Jainism, with the freedom for citizens to practice any religion they want to. With the governance of 35 different states and union territories in the country, there has originated a sense of regionalism amongst the various parts, with different states displaying different cultures, which although eventually fuse through a common bond to showcase a national cultural identity.

**B.** Since ancient times, the spiritual land of India has displayed varied hues of culture, religion,

race, language, and so on. This variety in race, culture, religion, etc. accounts for the existence of different ethnic groups who, although, live within the sanctums of one single nation, profess different social habits and characteristics. Regional territories in India play an important role in differentiating these ethnic groups, with their own social and cultural identities.

**C.** The Constitution of India has recognised 22 different languages that are prevalent in the country, out of which, Hindi is the official language and is spoken in most of the urban cities of India. Other than these 22 languages, there are hundreds of dialects that add to the multilingual nature of the country.

- (a) CBA
- (b) ABC
- (c) ACB
- (d) BAC
- (e) None of these

**104) A.** India has been implementing a policy of asymmetric engagement to strengthen bridges of friendship and create new opportunities for the growth, security and well-being of her neighbours both bilaterally and through the SAARC mechanism.

**B.** India is committed to fostering the sense of a South Asian Identity through the SAARC

## SBI Clerk Mains 2020 Memory Based Paper – English Version

process, enhancing mutual confidence in multiple areas and in trying to leverage India's rapid economic growth into win-win arrangements with her neighbours. India remains conscious of this vision of South Asian Integration in bilateral engagements with her neighbours as well.

C. At the last SAARC Summit held in Maldives in November 2011, Prime Minister Dr. Manmohan Singh articulated India's vision of regional economic integration based on enhanced intra-regional trade, investment flows and interconnectivity. India announced virtual elimination of sensitive lists affecting exports of all least developed SAARC countries to India and took various initiatives for capacity building.

- (a) ACB
- (b) ABC
- (c) CAB
- (d) BAC
- (e) BCA

**Directions (105-109):** A paragraph has been given below. There are five blanks in it. You are required to read the paragraph carefully and select an option that fits each blank to make the paragraph meaningful

The users of this seamless one-time payment \_\_\_ (105) \_\_\_ will be able to redeem the voucher without a card, digital payments app or internet banking access, at the service provider. e-RUPI connects the \_\_\_ (106) \_\_\_ of the services with the \_\_\_ (107) \_\_\_ and service providers in a digital manner without any physical interface. It also \_\_\_ (108) \_\_\_ that the payment to the service provider is made only after the transaction is completed. Being pre-paid in nature, it assures timely payment to the service provider without the involvement of any \_\_\_ (109) \_\_\_.

**105) Which of the following words would fit into (105)?**

- (a) Gizmo
- (b) Gateways
- (c) Mechanism
- (d) Tool
- (e) None of these

**106) Which of the following words would fit into (106)?**

- (a) Upholders
- (b) Promoters
- (c) Features
- (d) Sponsors
- (e) None of these

**SBI Clerk Mains 2020 Memory Based Paper – English Version**

**107) Which of the following words would fit into (107)?**

- (a) Devisees
- (b) Benefactors
- (c) Beneficiaries
- (d) Legatees
- (e) None of these

**108) Which of the following words would fit into (108)?**

- (a) Assures
- (b) Ensures
- (c) Features
- (d) Clinches
- (e) None of these

**109) Which of the following words would fit into (109)?**

- (a) Intermediaries
- (b) Mediation
- (c) Intermediary
- (d) Arbiter
- (e) None of these

**Directions (110-115): Read the given passage carefully and answer the questions that follow**

There is no pomp- just a house with a tin roof, lost behind rows of shops selling stationery,

meat and groceries. But in Manipur's Ukhrul town, this inconspicuous house is far more powerful than any office of the central or state government. This is the office of the underground. Rebels, not the government, run the show in Manipur and several other areas of the northeast. Largely ignored by the national government and media for decades, the region is home to some of the world's longest running insurgencies, the most complex web of militancy in India.

"It is an open secret. There is a parallel government running in Manipur - because people are not getting what they expected of the government," said L.M. Ngaranmi. A Naga community leader in Manipur's Ukhrul district bordering Myanmar. In Ukhrul, the face of the underground is the man known to most by his position - the "Chief Administrative Officer". He was travelling to Dimapur, the rebel headquarters when a meeting was sought with him. Among his many jobs is collecting "tax". In Manipur, government employees have it deducted at source by rebel agents at the workplace. Across the region, hundreds of thousands of contractors, traders, shopkeepers and most people with any sort of stable income

## SBI Clerk Mains 2020 Memory Based Paper – English Version

pay hefty cuts to the underground. Abductions for ransom - and killings- are frequent.

Even the governor admits the state has been invisible in many areas. "When I came to Manipur there were six sub divisions totally under underground control for ten years. A ten year old boy had never seen the face of a police constable," Manipur Governor, Shivinder Siddhu said. Not much has changed; in fact the rebels' influence is even more sweeping. According to police estimates, the United Liberation Front of Asom (ULFA) makes hundreds of crores of rupees annually from extortion. Central intelligence officials say that the NSCN (IM), the main Nagaland insurgent group that has a cease-fire with the government, has been passing its annual budget of between Rs.20 crores and Rs.25 crores from taxes each year. There is no way to independently confirm the figures.

Across the region, insurgency exists to some degree in almost all the eight states of northeast Assam, Manipur, Nagaland, Tripura, Mizoram, Meghalaya, Arunachal Pradesh and Sikkim. Almost 5700 militants' attacks have taken place since 2003 killing almost 4,000 people, mostly militants and civilians. In Manipur, nearly all

consumer goods being sold in shops from torches to cars - cost substantially higher because all vehicles coming to the state have to pay extortion money at Dimapur in Nagaland, headquarters of the NSCN (IM) the main Naga rebel group. "It is not possible for any government to prevent this 'extortion' completely." Nagaland's Chief Minister Neiphiu Rio recently told the State Assembly.

"Money comes from different departments of Manipur and the IM is taking annual taxes, transport tax, godown tax and so on. It is becoming quite unbearable," said Yumnam. Joy Kumar, the Manipur Police Chief, Cadres of the NSCN - IM mostly teenagers and men in their twenties- roam the streets of Dimapur, checking if vehicles have the receipts they get after paying tax to the Government of People's Republic of Nagaland. Any vehicle without receipt is burnt or damaged. Some face: worst fate. Ramesh, a trader's son, fled the state after his father was killed in daylight publicly. "We had a flourishing shop and used to get letters from the rebel groups, including both factions of the NSCN for donations. My father paid these people, but when demands became unreasonable he refused, and had to pay the price", he said. Worse there is deep alienation

## SBI Clerk Mains 2020 Memory Based Paper – English Version

between New Delhi and the north east adding to the churning.

**A police officer recalls the day when he was \_\_\_\_\_ for official work to Agartala by aides of a High Court Judge from outside the state.**

The next morning, the judge summoned the officer to his room and said he was not pleased with the state government's arrangements. "But Agartala is the capital of Tripura, it does not come under Assam, your honour," the officer said. On the other side of the divide, are citizens like those on a recent flight to Dimapur from Kolkata, who muttered: "So many Indians on the flight today!"

**110) The people named in the passage are?**

- (a) Yumnam, Joykumar, Ramesh, Sarian Setumal
- (b) Nagaraumi, Shivinder, Yumnam
- (c) Remesh, Nanderthal, Seriou
- (d) Agaranmi, Joykumar, Nandertha
- (e) None of the above

**111) According to the passage, which of the following statements is NOT completely correct?**

- (a) The quantum of money collected through taxes and extortions by the insurgents runs into more than a score of crore

(b) Almost half a dozen subdivisions in Manipur remained under effective control of insurgents for about ten years.

(c) The underground organisations run a parallel government in all states of the north eastern region.

(d) Extortion money for all goods and services is forcibly collected by insurgents at Dimapur.

(e) The chief administrative officer of the rebels functions from his inconspicuous dwelling.

**112) 'So many Indians are in flight today' This phrase has been used by the author to imply?**

- (a) The foreign insurgents who have taken over the NE border-states of India.
- (b) The wide chasm between the people of NE states.
- (c) The feeling of alienation that is evident in the people of NE states.
- (d) The distinctive appeal of insurgents regarding the NE states.
- (e) None of the above.

**113) Why has it been mentioned that a parallel government is running in Manipur?**

- (a) Because the rebels are more powerful in the state.

## SBI Clerk Mains 2020 Memory Based Paper – English Version

- (b) Every citizen has his own expectations and hence no one can be satisfied .
- (c) The government gives a free hand to the people.
- (d) Because the government has not been able to fulfill the expectations of the people.
- (e) There is a lack of communication between New Delhi and the state.

**114) Why do the goods cost much higher in Nagaland markets?**

- (a) The vehicles without the receipt of the extortion money paid are either burnt or damaged.
- (b) Nagaland being alienated makes it costly because of the petrol prices.
- (c) When one doesn't fulfill the rebels' demands one pays off by losing their lives.
- (d) The region is home to some of the world's longest running insurgencies.
- (e) None of these

**115) Which word would fill the blank in --> 'A police officer recalls the day when he was \_\_\_\_\_ for official work to Agartala by aides of High Court Judge from outside the state?'**

- (a) Tortured
- (b) Summoned
- (c) Pressurized

- (d) Decead
- (e) Dictated

**Directions (116-120):** In each question, the word at the top of the table is used in five different ways, numbered 1 to 5. Choose the option in which the usage of the word is incorrect or inappropriate

**116) WIND**

- (a) The sudden downpour accompanied by cool wind brought down the temperature to a considerable level
- (b) The mother instructed her daughter to wind up the house before leaving
- (c) He was too distressed to wind down and sleep
- (d) When working with electricity, one should take enough precautions to be always between wind and water
- (e) She decided to wind the bandage around the wound to avoid catching any infection or septic

**117) BOW**

- (a) The students bow before the Principal out of respect

## SBI Clerk Mains 2020 Memory Based Paper – English Version

- (b) The chancellor decided to bow out after serving for a term and signed the contract seeking further extension of three years
- (c) She drew the bow and sent the arrow but missed the target
- (d) The huge amount of loan will eventually bow him down
- (e) The young dancer made her bow last night to appreciative spectators

### **118) BELEAGUER**

- (a) Jasmine was beleaguered of the crime when the real criminal confessed.
- (b) The beleaguered minister seldom came to office as he struggled to deal with the growing scandal about his extramarital relations
- (c) The substitute teacher was surrounded by a noisy lot of toddlers who relentlessly beleaguered her
- (d) Ashish felt beleaguered at work as he fell behind in his assignments and had little assistance from other colleagues
- (e) All are correct

### **119) RECONDITE**

- (a) The librarian found it recondite as to why books borrowed from the library could not be returned at the correct time

- (b) During the seminar the recondite pronouncements of the speaker every few moments left the audience totally baffled
- (c) The Nobel prize winning scientist read many recondite books in order to obtain the material for his renowned papers on evolution of man
- (d) The professor's thesis was so recondite that the research student could hardly understand what the first few sentences meant
- (e) All are correct

### **120) IMPERVIOUS**

- (a) Rahul was impervious to criticism – he did what he wanted to do no matter what anyone said
- (b) Samay was so impervious that he never took more than a few seconds to make up his mind
- (c) A new launched raincoat by a known brand, if it is any good, is impervious to water
- (d) Having read so many negative reviews of his performances, the movie star had learned to ignore them, and was now impervious to criticism
- (e) All are correct

**SBI Clerk Mains 2020 Memory Based Paper – English Version**

**Answer With Explanation**

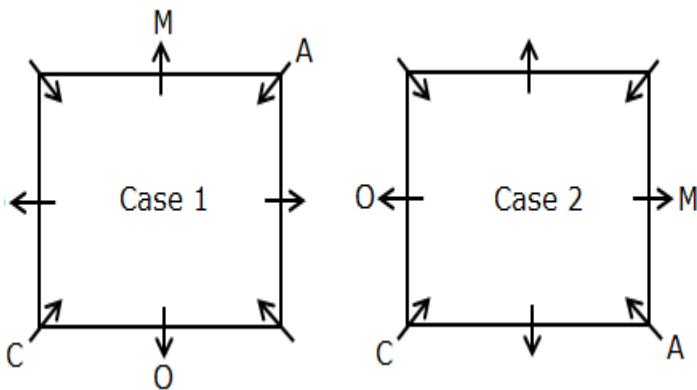
**Directions (1-5):**

1. Answer: c) E
2. Answer: b) A
3. Answer: a) U
4. Answer: d) Second to the right
5. Answer: e) G

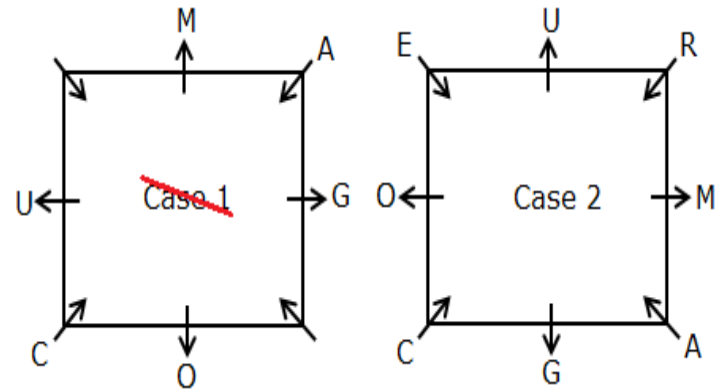
**Explanation:**

**Arrangement 1:**

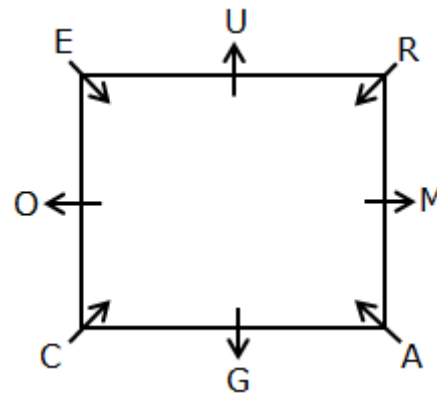
1. Only two persons sit between M and C, who sits facing towards the centre.
2. A sits to the immediate right of M.
3. O sits third to the left of A.



4. U sits second to the right of O.
5. G sits adjacent to A and third to the right of E.
6. R is one of the persons. Hence, case 1 gets eliminated.



**Arrangement 1:**



**Arrangement 2:**

All the persons (in alphabetical order) are allowed to roll the die. The persons getting even number are shifted to room X whereas the persons getting odd number are shifted to room Y. The following is the number shown in the die for each person:

A, C, E, G, M, O, R, U  
4, 3, 5, 6, 2, 1, 5, 4

Thus, the persons in room X are: A, G, M, U.

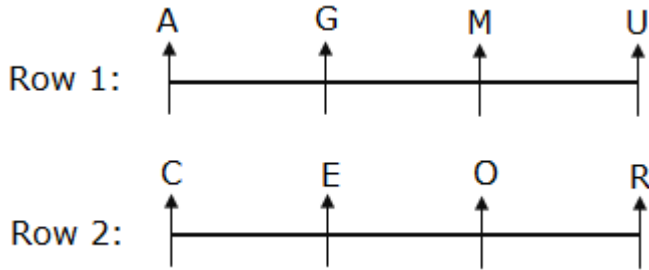
The persons in room Y are: C, E, O, R.

**Arrangement 3:**

All the persons are made to sit in two parallel rows in alphabetical order from left to right facing towards north. The persons from room X sits in

**SBI Clerk Mains 2020 Memory Based Paper – English Version**

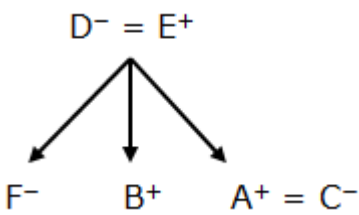
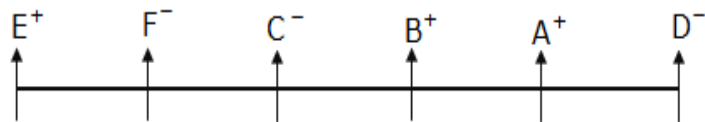
row 1 whereas the persons from room Y sits in row 2. The persons in row 2 sit exactly behind the persons in row 1.



**Directions (6-10):**

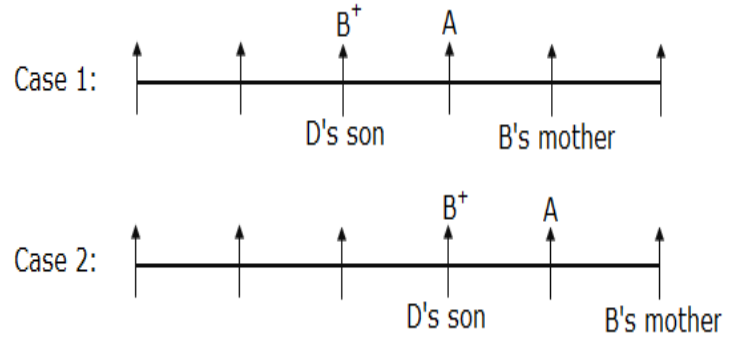
- 6. Answer: b) A
- 7. Answer: c) E
- 8. Answer: e) More than three
- 9. Answer: a) Aunt
- 10. Answer: d) Fourth to the left

**Solution:**

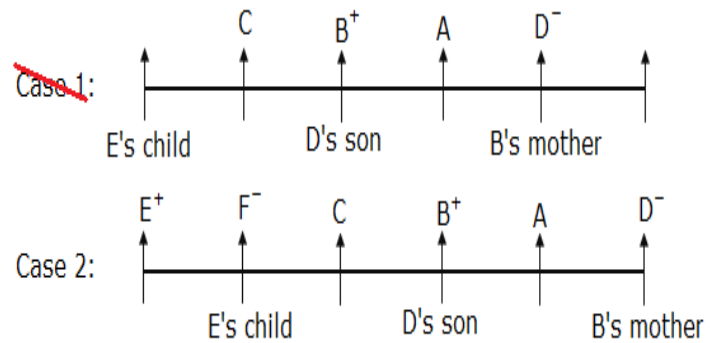


**Explanation:**

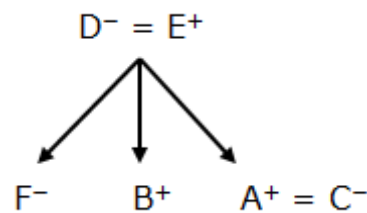
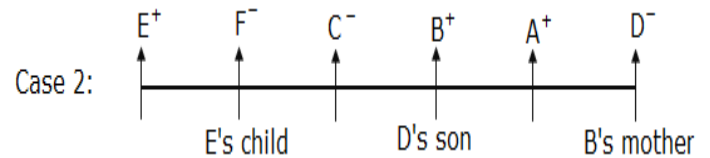
- 1. B stands third from one of the extreme ends and is second to the left of his mother.
- 2. B is the son of D and brother of A, who stands to the immediate right of B.



- 3. C stands second to the left of A and immediate right of the one who is the child of E.
- 4. E is the father of A and stands to the left of his wife.
- 5. F is neither the son nor the wife of E. Hence, case 1 gets eliminated.



- 6. C is the daughter-in-law of D whereas B is unmarried. Hence, A is the son of both D and E.



**SBI Clerk Mains 2020 Memory Based Paper – English Version**

**Directions (11-15):**

11. Answer: d) F

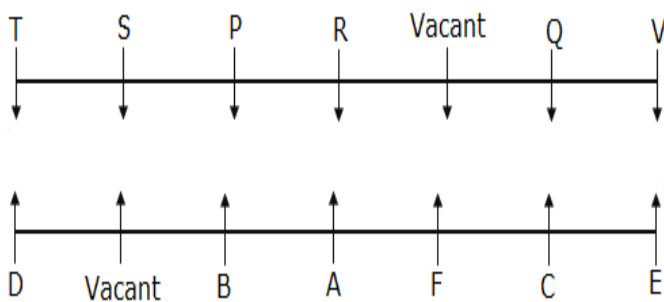
12. Answer: c) Three

13. Answer: e) None of these

14. Answer: a) E

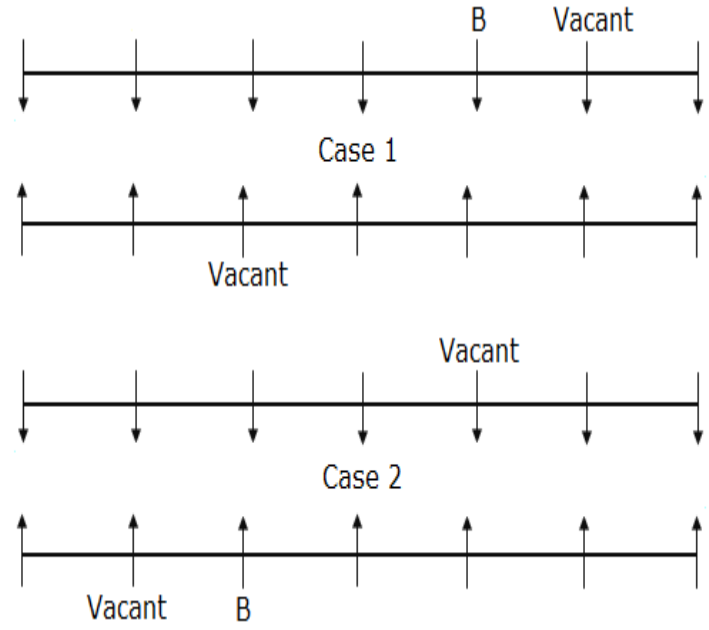
15. Answer: c) C

**Solution:**

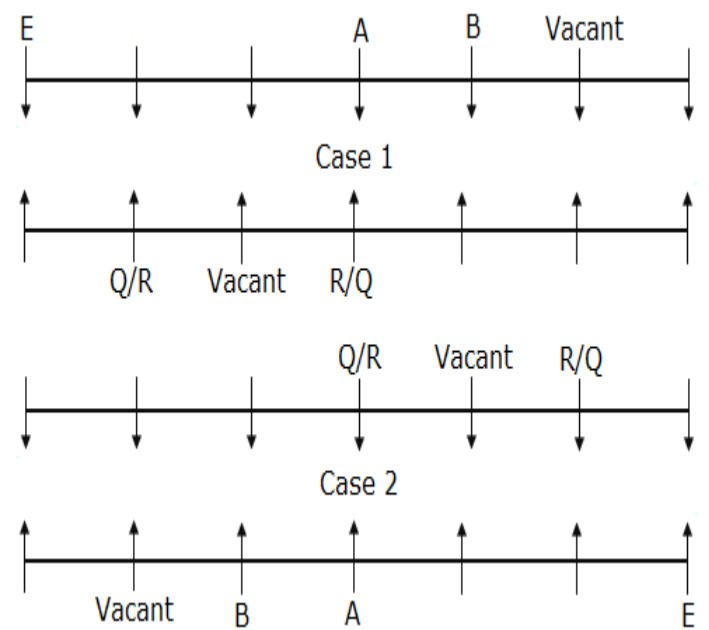


**Explanation:**

1. B sits third from one of the extreme ends and sits to the immediate right of the vacant seat.
2. More than two persons sit to the right of B.
3. The one who sits exactly opposite to the vacant seat, sits second to the right of B.



4. Both R and Q sit adjacent to the vacant seat of the same row where neither of them is adjacent to A.
5. Only two persons sit between E and A, who doesn't sit at any of the ends.
6. At least one person sits to the left of E.

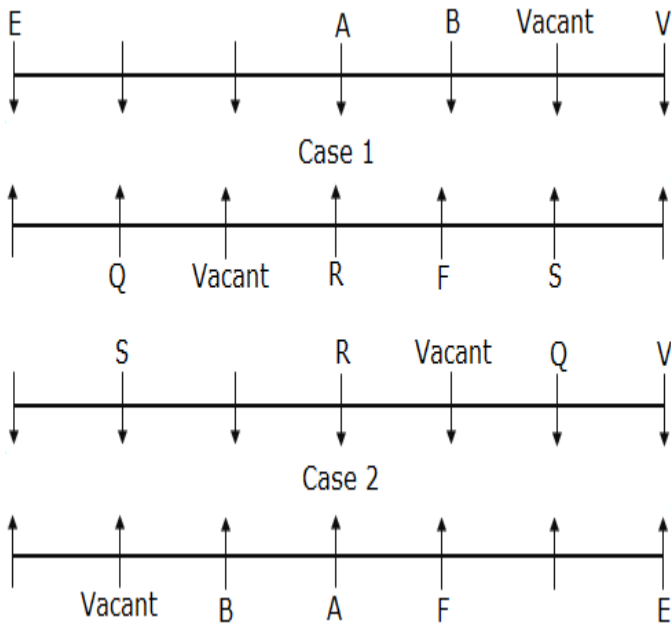


7. S sits second to the right of R.
8. F faces north and sits second to the left of the one who faces V.

**SBI Clerk Mains 2020 Memory Based Paper – English Version**

9. Neither R nor A is adjacent to V.

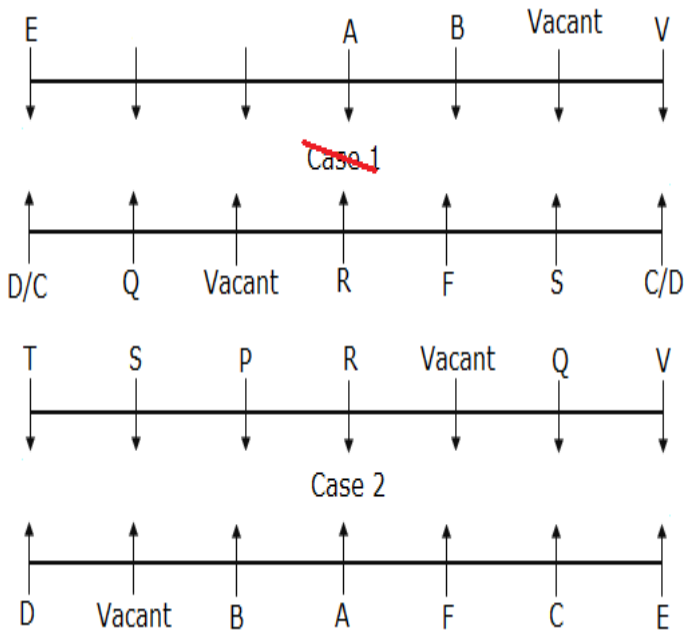
10. A does not face Q.



11. More than three seats are between C and D who sits at the extreme end.

12. Only one person sits between T and P who doesn't face D.

13. Hence, case 1 gets eliminated.



**Directions (16-20):**

16. Answer: c) Step 3

17. Answer: e) None of these

18. Answer: b) Jack

19. Answer: d) 8

20. Answer: a) R♦st 59 Gr¥w 25 B◊sh 43

**Explanation:**

In each step, one number and one word are arranged simultaneously.

For numbers: Numbers are arranged in ascending order and in each number, 2 is added.

For words: Words are arranged in descending order according to the place value of vowels present in the word (The word having 'u' arranged first, followed by 'o' then 'i' and so on)

**Vowels are replaced by some symbols:**

u=◊, o=¥, i=•, e=♦, a=∅

With the same rules, the following steps are derived for the given input.

**Input:** Thin 83 Bush 57 Jack 23 75 Rest 41 Grow

**Step 1:** 25 Thin 83 57 Jack 75 Rest 41 Grow B◊sh

**Step 2:** Gr¥w 25 Thin 83 57 Jack 75 Rest B◊sh 43

**Step 3:** 59 Gr¥w 25 83 Jack 75 Rest B◊sh 43 Th◊n

**Step 4:** R♦st 59 Gr¥w 25 83 Jack B◊sh 43 Th◊n 77

**Step 5:** 85 R♦st 59 Gr¥w 25 B◊sh 43 Th◊n 77 J◊ck

**Directions (21-25):**

## SBI Clerk Mains 2020 Memory Based Paper – English Version

21. Answer: b) Q

22. Answer: d) January

23. Answer: a) M

24. Answer: c) P

25. Answer: e) More than three

**Solution:**

Month	Person
January	K
February	G
April	P
May	T
June	J
July	S
August	R
September	W
November	Q
December	M

**Explanation:**

1. R visits the place in one of the months having 31 days after May.
2. Only four persons visit between R and G who visits immediately before P.

	Case 1	Case 2	Case 3
Month	Person	Person	Person
January	G		
February	P	G	
April		P	
May			
June			G
July	R		P
August		R	
September			
November			
December			R

3. W visits three persons after the one who visits second after P.
4. Only one person visits between W and M who doesn't visit before R.
5. Hence, case 3 gets eliminated.

	Case 1	Case 2	<del>Case 3</del>
Month	Person	Person	Person
January	G		
February	P	G	
April		P	
May			
June			G
July	R		P
August	W	R	
September		W	
November	M		
December		M	R

## SBI Clerk Mains 2020 Memory Based Paper – English Version

6. Q visits after W.
7. J visits in the month having 30 days and immediately after T.
8. K visits before S who neither visits after W nor M.
9. Hence, cases 1 and 1a get eliminated.

	<del>Case 1</del>	<del>Case 1a</del>	Case 2
Month	Person	Person	Person
January	G	G	K
February	P	P	G
April	K	K	P
May	T	T	T
June	J	J	J
July	R	R	S
August	W	W	R
September	Q	S	W
November	M	M	Q
December	S	Q	M

**Directions (26-30):**

26. Answer: c) D

27. Answer: b) 25

28. Answer: d) Orange

29. Answer: e) None

30. Answer: a) 33

**Solution:**

Year	Age	Person	Colour
1960	60	D	Green
1965	55	B	Violet
1977	43	E	Blue
1989	31	G	Yellow
1995	25	A	Red
2007	13	C	Orange
2010	10	F	Indigo

**Explanation:**

1. F's age was an even number and likes Indigo. The difference between the ages of C and F is less than 6. The number of persons born before and after the one who likes Yellow is the same.

		Case 1		Case 2	
Year	Age	Person	Colour	Person	Colour
1960	60	F	Indigo		
1965	55	C			
1977	43				
1989	31		Yellow		Yellow
1995	25				
2007	13			C	
2010	10			F	Indigo

2. Only one person was born between the one who likes Yellow and B, who likes Violet. The one who likes Green was born immediately before B. The age of E is a prime number but doesn't like Yellow.

## SBI Clerk Mains 2020 Memory Based Paper – English Version

		Case 1		Case 2	
Year	Age	Person	Colour	Person	Colour
1960	60	F	Indigo		Green
1965	55	C		B	Violet
1977	43	E		E	
1989	31		Yellow		Yellow
1995	25		Green		
2007	13	B	Violet	C	
2010	10			F	Indigo

3. A likes Red colour whereas C doesn't like Blue. The age difference between G and E is double the value of the age difference between G and A. Hence, case 1 gets eliminated.

		<del>Case 1</del>		Case 2	
Year	Age	Person	Colour	Person	Colour
1960	60	F	Indigo	D	Green
1965	55	C	Orange	B	Violet
1977	43	E	Blue	E	Blue
1989	31		Yellow	G	Yellow
1995	25		Green	A	Red
2007	13	B	Violet	C	Orange
2010	10	A	Red	F	Indigo

**Directions (31-35):**

**31. Answer: b) 5#\$! 3@@4 48\***

Condition II is applied.

**32. Answer: a) # \$27 48+1**

No condition is applied.

**33. Answer: d) +@@& +82+**

Conditions II and III are applied.

**34. Answer: d) &\* %#\$! 2+@@**

**35. Answer: b) !\$2!+ !\$\* 57+&82!**

Conditions I is applied.

**Directions (36-40):**

**36. Answer: d) Three**

**37. Answer: c) 3**

**38. Answer: e) More than three**

**39. Answer: a) 9**

**40. Answer: c) Third from 4**

**Explanation:**

**Given:** E 6 D # B 8 7 J 4 % G 0 F 9 C S & V \* P  
W 1 @ 3 N \$ R 2 ! Y M 5 ^

**step 1:** E 6 D # D 8 7 J 4 % I 0 F 9 C S & V \* P  
W 1 @ 3 N \$ T 2 ! Y M 5 ^

**step 2:** E 6 D # D 8 7 J 7 % I 0 F 9 C S & V \* P  
W 4 @ 3 N \$ T 5 ! Y M 8 ^

**step 3:** E 6 D # G 8 7 J % I 0 F 9 C S & V \* P W  
4 @ 3 N \$ T 5 ! Y M ^

**41. Answer: e**

**Solution**

a) Abroad, Accept, Active

aabdor, accept, aceitv → bce

b) Battle, Beauty, Become

abeltt, abetuy, bceemo → eee

c) Center, caught, Cancer

ceenrt, acghtu, accenr → egc

**SBI Clerk Mains 2020 Memory Based Paper – English Version**

d) Danger, Defeat, Degree

adegnr, adeeft, deeeegr→eee

e) Engine, Ending, Employ

eeginn, deginn, elmopy→ggm

**42.Answer: a**

**Solution**

a) Actor, Drawn, Event, Women→ T, A, E,

M→Team,mate, meat,tame

b) Brain, Bring, Badly, Later→ A, I, D, T

c) Click, Clear, Cover, Gross→I, E, V, O

d) Broad, Event, Alive, Anger→O, E, I, G

e) Field, Above, Hotel, fixed→E, O, T, X

**43.Answer: b**

**Solution**

a) Bath, Area, Back, Coal

→thba, reaa, kcba, olca→babcb

b) Date, Came, good, Ford

→teda, meca, oogd, rofd→dcgfb

c) Hang, Held, Item, King

→nhga, lhed, tmie,nkig→geiib

d) Made, Meal, Pain, Rock

→meda, mlea, pnia, rokc→deikb

**44.Answer: c**

**Solution**

a) Art, Ask, Bet, Big

Bsu, btl, cfu, cjh→Two vowels

b) Box, Bug, Cow, Dip

cpy, cvh, dpv, eqj→one vowel

c) Eye, Guy, Hit, Hot

fzf, hvz, iju, ipu→four vowels

d) Map, Met, Mug, Oil

nbq, nfu, nvh, pjv→one vowel

e) Pin, Red, Row, Say

qjo, sfe, spx, tbz→ two vowel

**45.Answer: e**

**Directions (46-50):**

**46.Answer: d) Four**

**47.Answer: b) S**

**48.Answer: a) R-black**

**49.Answer: c) R**

**50.Answer: c) Fourth**

**Solution:**

From the given statements, Number of persons who live below as well as above U is the same.

Only two persons live between U and the one who likes blue.

So we have two possible cases i.e. case 1 and case 2.

Only one person lives between the one who likes blue and S.

Floors	Case-1		Case-2	
	Persons	Colours	Persons	Colours
7				Blue
6				
5			S	
4	U		U	
3	S			

## SBI Clerk Mains 2020 Memory Based Paper – English Version

2				
1		Blue		

More than two persons live between the one who likes red and S.

T lives immediately above the one who likes red.

So case-1 is eliminated.

The one who likes white lives on an even numbered floor immediately above V.

No two person lives on adjacent floors according to the English alphabetical order.

Floors	Case-2	
	Persons	Colours
7		Blue
6		
5	S	
4	U	
3		
2	T	White
1	V	Red

The one who likes black lives immediately above the one who likes golden.

Three persons live between P and T.

S does not like black.

P likes green.

R lives above the one who likes yellow. So the final arrangement is:

Floor	Persons	Colours
7	R	Blue
6	P	Green
5	S	Yellow
4	U	Black
3	Q	Golden
2	T	White
1	V	Red

### 51) Answer: E

Let us take total number of boys in class 8<sup>th</sup> be '100x'

Therefore number of boys in class 9<sup>th</sup> be 120x

Let us assume total number of girls in class 10<sup>th</sup> be '100y'

Therefore number of girls in 9<sup>th</sup> be '150y'

It is given that,

$$100x + 100y = 56$$

$$100x + 120x + 100y + 150y = 128$$

$$220x + 250y = 128$$

By solving the above we get,

$$x = 2/5$$

$$100x = 40$$

$$100y = 16$$

Let number of girls from class 8<sup>th</sup> be 'a'

Therefore number of boys from class 10<sup>th</sup> be 'a+17'

$$40 + 48 + 16 + 24 + a + a + 17 = 181$$

$$a = 18$$

All the values are tabulated as follows

## SBI Clerk Mains 2020 Memory Based Paper – English Version

Class	Number of boys	Number of girls
8 <sup>th</sup>	40	18
9 <sup>th</sup>	48	24
10 <sup>th</sup>	35	16

Number of boys in class 11<sup>th</sup> = 80% of 35 = 28  
 75% of boys in class 11<sup>th</sup> = 50% of girls in class 11<sup>th</sup>  
 $3(28) = 2(\text{number of girls in class } 11^{\text{th}})$   
 $42 = \text{number of girls in class } 11^{\text{th}}$   
 Total students in class 11<sup>th</sup> =  $42 + 28 = 70$   
 % of girls in class 11<sup>th</sup> =  $\frac{42}{70} \times 100 = 60\%$

### 52) Answer: A

Number of boys present in class 11<sup>th</sup> be  $11a$   
 Therefore number of girls present in class 11<sup>th</sup> be  $19a$   
 Total students present in class 11<sup>th</sup> =  $11a + 19a = 30a$   
 Total students absents in class 11<sup>th</sup> =  $\frac{30a}{75} \times 25 = 10a$   
 Let number of boys absent in class 11<sup>th</sup> be 'b+14'  
 Therefore number of girls absent in class 11<sup>th</sup> 'b'  
 Therefore,  
 $19a + b = 65$  ----- i)  
 $b + b + 14 = 10a$   
 $5a - b = 7$  ----- ii)  
 By solving the above, we get

$$a = 3$$

Total students in class 11<sup>th</sup> =  $40a = 120$

$$\text{Required percentage} = \frac{130 - 120}{130} \times 100 = 7.69\%$$

### 53) Answer: D

Number of boys in 2019 in class 7<sup>th</sup> =

$$\frac{40}{(100 - 16.67)} \times 100 = 48$$

Let number of girls in 2019 in class 7<sup>th</sup> be '100x'

Total students in class 7<sup>th</sup> in 2019 =  $48 + 100x$

Number of students passed in 2019 = 75% of  $(48 + 100x) = 36 + 75x$

Number of new admission (boys in the year 2020) =  $100y$

Therefore, number of girls who got admission in 2020 = 75% of  $100y = 75y$

Total students in 2020

$$36 + 75x + 100y + 75y = (40 + 18)$$

$$75x + 175y = 22$$

From this value required solution can't be determined

### 54) Answer: C

Total students who cleared class 10<sup>th</sup> =  $(35 + 16) - 11 = 40$

Number of boys who didn't attend the exam = 20% of 35 = 7

Number of boys attended the exam =  $35 - 7 = 28$

Number of girls who didn't attend the exam =  $7 \times (100/175) = 4$

Total number of girls who attended in class 10<sup>th</sup> =  $16 - 4 = 12$

so, total no. of students attended in class 10<sup>th</sup> =  $28 + 12 = 40$

**SBI Clerk Mains 2020 Memory Based Paper – English Version**

As, total no. of attended and total no. of passed students is equal so, we can say all the girls who attended the exam passed the exam.

So, no. of girls in class 11<sup>th</sup> in 2021 = 12

**55) Answer: C**

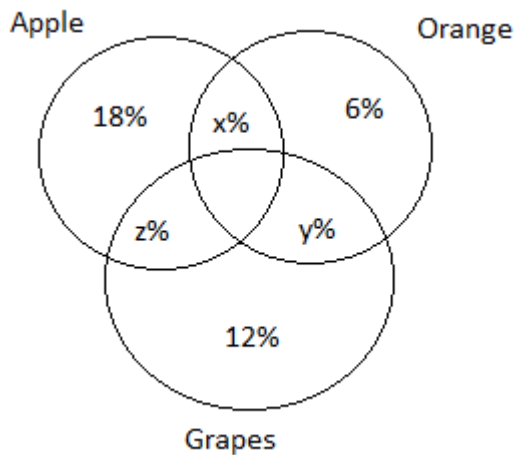
Sum of any of the fruits liked by the students = 100%

Number of students like only apple = 18%

Number of students like only orange = 6%

Number of students like only grapes = 12%

Venn diagram for the given data is as follows,



Percentage of students like only one fruits =

$$18\% + 12\% + 6\% = 36\%$$

Therefore remaining (100-36) i.e.64% of students like more than one fruits

All other values are multiple of 10%

If the minimum percentage is 10% then

$$10\% + 20\% + 30\% = 60\% < 64\%$$

All the values of (x,y,z) are multiple of 10

i.e.(10%, 20%, 30%)

Number of students like all the fruits =100% - (

$$36\% + 10\% + 20\% + 30\%)$$

$$= 4\%$$

$$= 4\% \text{ of } 350$$

$$= 14$$

**56) Answer: A**

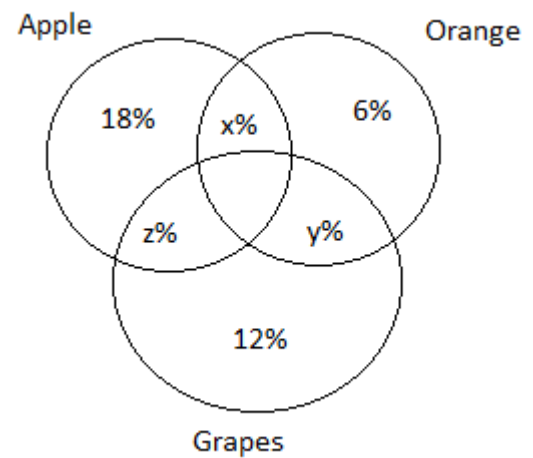
Sum of any of the fruits liked by the students = 100%

Number of students like only apple = 18%

Number of students like only orange = 6%

Number of students like only grapes = 12%

Venn diagram for the given data is as follows,



Percentage of students like only one fruits =

$$18\% + 12\% + 6\% = 36\%$$

Therefore remaining (100-36) i.e.64% of students like more than one fruits

All other values are multiple of 10%

If the minimum percentage is 10% then

$$10\% + 20\% + 30\% = 60\% < 64\%$$

All the values of (x,y,z) are multiple of 10

i.e.(10%, 20%, 30%)

Therefore maximum possible value of

percentage of students like apple and orange

but not grapes = 30%

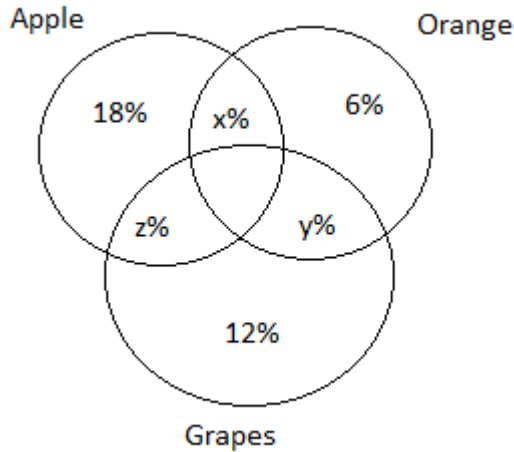
**57) Answer: D**

Sum of any of the fruits liked by the students =

$$100\%$$

**SBI Clerk Mains 2020 Memory Based Paper – English Version**

Number of students like only apple = 18%  
 Number of students like only orange = 6%  
 Number of students like only grapes = 12%  
 Venn diagram for the given data is as follows,



Percentage of students like only one fruits =  
 $18\% + 12\% + 6\% = 36\%$   
 Therefore remaining (100-36) i.e.64% of students like more than one fruits  
 All other values are multiple of 10%  
 If the minimum percentage is 10% then  
 $10\% + 20\% + 30\% = 60\% < 64\%$   
 All the values of (x,y,z) are multiple of 10  
 i.e.(10%, 20%, 30%)  
 Here,  $y=10\%$  (minimum)  
 $x = 20\%$   
 $z = 30\%$   
 Required difference =  $20\% \sim (100\% - 36\%) = 44\%$  of 350 = 154

**58) Answer: C**

Total cookies produced on each day =200  
 Total unsold cookies on Sunday = 10% of 200 = 20  
 Total sold cookies on Sunday = 200 – 20 = 180  
 Remaining 20 cookies sold on next day.

Total cookies produced on Monday = 200 +20 = 220  
 Similarly for all other days are calculated and the values are tabulated

Days	Total cookies	Number of cookies unsold	Number of cookies sold
Sunday	200	20	180
Monday	220	22	198
Tuesday	240	24	216
Wednesday	260	26	234
Thursday	280	28	252

Total cookies available for sale on Tuesday = 216  
 $9/14^{\text{th}}$  of the cookies i.e  $9/14 \times 216 = 139$  sold at Rs.x  
 Remaining i.e  $216 - 139 = 77$  sold at Rs.y  
 Total revenue = Rs.1716  
 $139(2a) + 77(3a) = 1716$   
 $a = 4$   
 Amount earned while selling the products at Rs.X =  $139 (2a) = Rs.1112$

**59) Answer: B**

Let total cookies baked on Friday = 6x  
 Number of cookies unsold on Friday = x  
 Therefore number of cookies sold on Friday = 6x – x =5x  
 Percentage of cookies sold on Friday =  
 $\frac{5x}{6x} \times 100 = 83.33\%$

**60) Answer: E**

**SBI Clerk Mains 2020 Memory Based Paper – English Version**

Total cookies baked on Sunday = 200  
 Number of fruit based cookies baked on Sunday  
 =  $(100-45-25)\%$  of 200 =  $30\%$  of 200 = 60  
 Total unsold cookies on Sunday = 18  
 Total fruit based cookies unsold on Sunday =  
 $\frac{1}{(2+1+3)}(18) = 3$   
 Therefore,  
 Total fruit based cookies sold on Sunday =  $60 - 3 = 57$

**61) Answer: B**

It is given that,  
 Profit earned by seller X = 82%  
 Average of the profits earned by seller Y and Z together = 75%  
 Profit earned by seller Y =  $75\% - 10\% = 65\%$   
 Sum of the profits earned by seller Y and Z together =  $75\% * 2 = 150\%$   
 Therefore  
 Profit earned by seller Z =  $150\% - 65\% = 85\%$   
 Ratio of profits earned by seller Z  
 $A3+A4+A2$  and  $A1+A5 = 13x:4x$   
 Total profit =  $17x = 85\%$  of 500 = 425  
 $17x = 425$   
 $x = 25$   
 Total profits earned on  $A1+A5 = 4x = 100$   
 It is given that,  
 $A1 - A5 = 25$   
 By solving the above equations we get,  
 $A5 = 37.5$

**62) Answer: E**

Total profits earned by seller X = 82% of 500 = Rs.410

Profit earned on article A2 = Rs.85  
 Profit earned on other articles  
 i.e  $A1+A3+A4+A5 = 410 - 85 = 325$   
 $x+x+10 + A4+ x+20 = 325$   
 From the above we have two unknown variable,  
 from this equation profit percentage of article A4 can't be determined

**63) Answer: D**

Percentage of marks scored by A = 86%  
 Total marks scored by A = 86% of 500 = 430  
 Total marks scored by A in S1, S2, S3 =  $84 * 3 = 252$   
 Let marks scored by A in S4 =  $x+10$   
 Marks scored by A in S5 =  $x$   
 $252 + x + x+10 = 430$   
 $x = 84$

**64) Answer: E**

Total marks scored by B = 390  
 Marks scored by B in S1 = 70% of 100 = Rs.70  
 Let marks scored by B in S2 =  $x+10$   
 Marks scored by B in S3 =  $x$   
 Marks scored by B in S4 =  $x-10$   
 $70 + x + x+10 + x-10 + S5 = 390$   
 $3x + S5 = 320$   
 Percentage of marks scored by B in S5 can't be determined

**65) Answer: C**

Let number of doctors in city X = number of engineers in city Z be 'x'  
 Let number of doctors in city Y = 'a'  
 Number of engineers in city A = 'b'

## SBI Clerk Mains 2020 Memory Based Paper – English Version

$$a + b = 263$$

Let number of engineers in city B = y

Therefore number of doctors in city B = y+60

$$y + y + 60 = 290$$

$$y = 115$$

Therefore number of doctors in city B = 175

Number of engineers in city Y = 228-a (given)

Number of engineers in city C = 228 - a + (228 - a)

$$= 456 - 2a$$

Total persons in city Y and C = 496

$$(456 - 2a) + 96 + a + 228 - a = 496$$

$$a = 142$$

$$142 + b = 263$$

Number of engineers in city A i.e b = 121

Number of doctors in city X = 142+11 = 153

Therefore number of engineers in city Z = 153

All the values are tabulated.

	City X	City Y	City Z	City A	City B	City C
Doctors	153	142	131	110	175	96
Engineers	102	86	153	121	115	172

$$\text{Required average} = \frac{153 + 142 + 110 + 175}{4} = 145$$

### 66) Answer: E

Number of doctors (other than cardiologists)

from city A = 70% of 110 = 77

Number of engineers (other than mechanical)

from city B = 60% of 115 = 69

$$\text{Required difference} = [(102 + 86 + 172) - (77 + 69)] = 214$$

### 67) Answer: B

Required difference

$$= (102 + 86 + 153 + 121 + 115 + 172) \sim$$

$$(110 + 121 + 290 + 96 + 172)$$

$$= 749 \sim 789$$

$$= 40$$

### 68) Answer: B

Total number of books in library D = 640

Total number of urdu books in library D = 144

Number of urdu books not issued = 75% of 144 = 108

Number of available books in D = 640 - 260 = 380

Required percentage =

$$\frac{108}{380} \times 100 = 28.42\% \text{ (approx)}$$

### 69) Answer: E

Total books in library C = 720

After replacement total reasoning books = quantitative aptitude books = 360

20% of books removed from the library, i.e 20% of 720 = 144

These 144 books are replaced with reasoning books.

The ratio of quantitative aptitude and reasoning books is not given, there number of quantitative aptitude books in the library can't be determined

### 70) Answer: C

Total number of books in library E = 75% of 560 = 420

Number of books not issued by library E = (640 - 260) - 60 = 320

Number of books issued by library E = 420 - 320 = 100

Let number of English books in library E = x

**SBI Clerk Mains 2020 Memory Based Paper – English Version**

Therefore number of hindi books in library E =

$$x+60$$

$$(x+ x+60) = 420$$

$$x = 180$$

Number of hindi books in library E = 180+60

$$=240$$

Number of English books issued by library E =

$$40$$

Therefore number of hindi books issued = 100 –

$$40 =60$$

Number of hindi books not issued by library E =

$$240 - 60 = 180$$

**71) Answer: D**

Side of P can be calculated from  $x^2-10x+25=0$

$$x^2-5x-5x+25=0$$

$$x(x-5)-5(x-5)=0$$

$$(x-5) (x-5) =0$$

$$X= 5, 5$$

Side of cube P = 5cm

Therefore side of cube A = 5+3 = 8cm

Side of Q can be calculated from  $y^2-4y-12=0$

$$y^2-6y+2y-12 =0$$

$$y(y-6) +2(y-6) =0$$

$$(y-6) (y+2) =0$$

Y= 6, -2 (take positive value only)

Side of cube Q = 6cm

Side of cube B = 6+4 = 10cm

Side of R can be calculated from  $z^2-8z+16 =0$

$$z^2-8z+16 =0$$

$$z^2-4z-4z+16 =0$$

$$(z-4) (z-4) =0$$

$$Z=4 \text{ cm}$$

Side of cube R =4cm

Therefore side of cube C = 4+5 =9cm

Required difference =  $9^3 - 6(5^2)$

$$= 729 - 150$$

$$= 579$$

**72) Answer: D**

Volume of cube Q =  $6^3 = 216\text{cm}^3$

Total surface area of cube A =  $6(8^2) = 384\text{cm}^2$

Total surface area of cube R =  $6(4^2) = 96\text{cm}^2$

Sum of the total surface area of A and R =  $384 +$

$$96 = 480\text{cm}^2$$

Required ratio

$$216: 480$$

$$9 : 20$$

**73) Answer: A**

Volumes of all the cubes together

$$=5^3 + 8^3 + 6^3 + 10^3 + 4^3 + 9^3$$

$$= 125 + 512 + 216 + 1000 +64 + 729$$

$$= 2646\text{cm}^3$$

**74) Answer: A**

It is given that,

In company A,

Total number of IT employees from 2018 = 30

Number of HR employees from 2018 = 25

Number of IT employees transferred to HR = 6

Number of IT employees in 2019 (if no HR transferred to IT ) =  $30 -6 =24$

Number of HR transferred to IT =  $28 - 24 =4$

Number of HR employees in 2019 =  $(25+6)-4 = 27$

Similarly for all other companies are calculated and the results were tabulated

## SBI Clerk Mains 2020 Memory Based Paper – English Version

Company	Number of IT employees (2018)	Number of HR employees (2018)	Number of IT employees (2019)	Number of HR employees (2019)
A	30	25	28	27
B	40	35	39	36
C	50	40	54	36

Total HR employees from company B in 2019 = 36

25% of the employees i.e 25% of 36 = 9 are Ph.d holders

Remaining 27 are non Ph.d holders

Required difference = 27 – 9 = 18

### 75) Answer: C

Total male employees of company A from HR in 2018 =  $\frac{2}{5}(25) = 10$

Total female employees of company A from HR in 2018 = 25-10 = 15

Total male employees of company A from HR in 2019 =  $\frac{4}{9}(27) = 12$

Total female employees of company A from HR in 2019 = 15

2 male employees from HR shifted to IT

Therefore number of employees in HR dept = 10 – 2 = 8

But in 2019, number of male employees are 12

Therefore 4 male members are transferred from IT to HR

### 76) Answer: C

Total employees in company D in 2019

$$= \frac{2}{3} \text{rd of } 54 + 75\% \text{ of } 36$$

$$= 36 + 27$$

$$= 63$$

### 77) Answer: D

$$\text{Volume of cylinder A} = \pi r^2 h = \pi (10)^2 (14) = 4400 \text{cm}^3$$

$$\text{Volume of each cube} = a^3 = 2^3 = 8 \text{cm}^3$$

$$\text{Number of cubes required for cylinder A} = \frac{\text{volume of cylinder}}{\text{Volume of cube}} = \frac{4400}{8} = 550$$

$$\text{Volume of cylinder B} = \pi r^2 h = \pi (49)(20) = 3080 \text{cm}^3$$

$$\text{Volume of each cube} = 2^3 = 8 \text{cm}^3$$

$$\text{Number of cubes required for cylinder B} = \frac{3080}{8} = 385$$

$$\text{Required difference} = 550 - 385 = 165$$

### 78) Answer: C

Required difference

$$= 60\% \text{ of } \pi(14^2)(12) - 20\% \text{ of } \pi(21^2)(9)$$

$$= 4435.2 - 2494.8$$

$$= 1940.4 \text{cm}^3$$

### 79) Answer: A

Required percentage =

$$\frac{(28-12)-(20-14)}{(28-12)} \times 100 = 62.5\%$$

### 80) Answer: C

$$\text{Required sum} = 2\pi [(r(h+r))_b + (r(h+r))_e]$$

$$= 2\pi [(7(27)) + (12(33))]$$

$$= 3677 \text{cm}^2$$

## SBI Clerk Mains 2020 Memory Based Paper – English Version

### 81) Answer: A

The phrase 'Benefit of doubt' is very commonly used when we believe something good that we hear about someone rather than believing something bad especially when we know that person closely.

Now, the main sentence says that if we are close to someone we believe that they won't harm us and hence we give them a benefit of doubt. This meaning is understood in only the first statement.

Statement b – says we hide their crimes which is not the case, so eliminate this

Statement c – says we always doubt on people which is again reverse of what is being talked about in the sentence

Statement d – talks of nepotism which is unrelated as per the topic

### 82) Answer: B

The idiom 'method to his madness' is used when we know that someone has a logical reason for behaving in a certain way that might look absurd or strange to others.

Things can be confusing or strange but that doesn't mean they have to be vague. Option (a) is close but this is eliminated as we have a better option.

Option (b) says that the investigation seemed absurd in the beginning but was later found to

be rational. This encapsulates the meaning in an apt manner.

Options (c) and (d) are absurd

### 83) Answer: C

The phrase 'wouldn't be caught dead' is used when you dislike something so much that you feel staying away from it would be okay otherwise it will be bad for you. The main thing in the meaning is 'dislike something'.

Other than option (c), no option talks specifically about dislike. They either talk about being bad for health or being uncooked.

So, Option (c) is the best answer.

### 84) Answer: B

Options (c), (d) and (e) can be ruled out as per their meanings.

Autarky --> Economic independence or self-sufficiency

Arbitrage --> buying and selling of securities, commodities or currency to gain from the price advantage

Amortisation --> the process of writing off the initial price of the assets

An 'Asset Market' is based on the cooperation between Investors and Traders. It works on commission so as per the context of the paragraph this can be ruled out too.

Auction means where bidding takes place, and the entire paragraph talks about bidding as the

**SBI Clerk Mains 2020 Memory Based Paper – English Version**

mode of functioning of the mentioned market.

So, option (b) is the correct choice.

**85) Answer: C**

Brands are created and not issued. This invalidates this option.

Stock --> the amount of money that a company has through selling shares to people. Now this as per the meaning as well won't fit in the blanks  
Barter as we know is an exchange of goods and services without money so this as well doesn't fit the paragraph.

Bond can be issued following the process mentioned in the paragraph so Bond is the correct option that can fill the blank.

**86) Answer: D**

Standard --> required or agreed level of quality or attainment will fit the blanks appropriately.

Other options fit one or two of three blanks but not all so that's the reason they can be eliminated.

Option (d) is the correct answer as it is the only word that fits in all three blanks meaningfully.

**87) Answer: D**

Options (b), (c) and (e) are eliminated because they will not fit grammatically.

The subject before the second blank is 'Some' which is plural so this indicates that the blank would carry a plural word. On the basis of this, Imprint will be eliminated as it is singular.

Option (d) hence, is the correct answer.

**88) Answer: C**

The correct pair denoting parts with errors is option (c) ie; AD.

A --> the correction would be in the word 'research' as the right usage should be 'carefully researched essays'. It's something that has already been done as in the essays have already been researched so, the past participle form will make sense here.

D --> the formation of the sentence involves the use of the coordinated conjunction 'not only... but also'. It goes like; the essays show not only how the belligerents in the war experimented the given things... but *they also show* the costs attached.

**89) Answer: A**

Part B after correction will be --> recognize sustainable *investment* as

D after correction would be --> ranging *from* transforming energy to reinventing protein (as the correct pair is 'from this – to that')

**90) Answer: D**

Part B --> the correct usage will be 'testing for climate change' so to must be replaced by for.

Part C --> testing is a singular subject so it must take a singular verb. The correct verb that should be taken here is 'requires'

Hence, BC is the correct pair of errors.

## SBI Clerk Mains 2020 Memory Based Paper – English Version

### 91) Answer: A

Following parallel construction; we must modify part A to make it correct

Part A --> poor **farming** and **fishing** practices {if one word is in (ing) form, the other should also be in the same}

Part C --> the verb 'has' is wrongly used as it will follow the subject 'climatic extremes' which is a plural subject so 'have' must replace 'has'

### 92) Answer: E

The given sentence is grammatically correct. No change needed.

### 93) Answer: B

According to the passage, the land which is not suitable for cultivation is ideally suited for Jatropha's plantation, option (b) appropriately explains this issue. All other options are very similar in meaning, but they do not convey the whole meaning. Therefore, option (b) is the correct answer.

### 94) Answer: B

Options (a), (c), (d), (e) are the statements that have been picked up from the passage. The passage clearly spells out that every hectare of Jatropha plantation used for generating biofuel is going to generate 110 man days in a year. Therefore, option (b) which states that

indigenous fuel would not generate jobs is incorrect. Option (b), therefore, is the correct answer.

### 95) Answer: D

The passage clearly brings out the need for the world to shift to bio-fuels due to fast vanishing fuel reserves. Therefore, there is a need to grow crops that could produce bio-fuel to run our motors. This is the meaning of the adage stated in the question, and hence, option (d) is the correct answer.

### 96) Answer: B

The word 'Eviscerated' means to disembowel which means to remove or destroy. It has been used in the passage to explain that Brazil's oil foreign reserve was completely wiped out. Hence option (b) destroy should be right.

### 97) Answer: A

The first paragraph ends with an optimistic prediction about our automobile industry. And the second paragraph starts with a word of caution that the industry will grow but it will come with its own challenges and threats.

We need an opposite to Caveat which is the best reflected through the first option. The other options are synonyms to caveat and option (e) is not related to the word at all.

## SBI Clerk Mains 2020 Memory Based Paper – English Version

Option (a) is the correct answer.

**98) Answer: B**

**Making a focused selection is \_\_\_\_\_.**

The line preceding the highlighted line says that alternative technologies are not easily available so the best way to complete the sentence would be 'essential' as it signifies that making a good selection is the need of the hour.

Hence, option (b) is the answer.

**99) Answer: A**

We know that in the perfect tense the structure that is followed should be;

Have + verb 3<sup>rd</sup> form.

In part (a) --> the correction would be in the word show.

Correct part --> in recent years, researchers have **shown** that

**100) Answer: E**

Out of the three paragraphs, B should start clearly.

Also, C should follow B, as it talks about the given worrying factors.

These points make BCA the best sequence for the given paragraphs.

**101) Answer: A**

B comes before A as when we talk of names in the sequence, the paragraph with only the last name will come after the paragraph with the full name so BA forms a link.

Also, C should start as it introduces 'Republic'.

So the logical order of the paragraphs will be; CBA

**102) Answer: C**

The correct order of the paragraphs is ABC.

A introduces the Indian Handicraft.

B tells us what do the artisans transfer in their art and what are these handicrafts made of.

C further elaborates the types of handicrafts and tells us more about them.

The sentences are already in their correct order hence, option (c) is the right answer.

**103) Answer: D**

B introduces the best with the introduction of Spiritual India.

B ends in explaining India's social and cultural identities which is carried forwards further by A.

BA is the best link which can be found in two options but C cannot start contextually and hence, option (d) is the correct answer.

**104) Answer: A**

A --> starts well by saying that India always is involved in strengthening its partnership with the neighboring countries etc

C --> talks about how India shared its vision for the same during the 2011 SAARC Summit

B --> continues explaining the vision being talked about in statement C

So, the best sequence is ACB, ie; option (a).

**SBI Clerk Mains 2020 Memory Based Paper – English Version****105) Answer: C**

The correct answer is option (c). The words 'Gizmo' and 'Tool' appear to fit in but they are subsided as they are not relating to any process which is being discussed in the paragraph. Option (b) is quite close to our correct choice but it has to be subsided as there should be some singular word fitting in as the blank precedes 'this' which means for one.

**106) Answer: D**

The correct answer is option d. The word 'features' is out of context so it is subsided. Option (a) has a meaning similar to 'heir' which does not make sense here. Option (b) appears to be suitable but if we go by logic, the promoters need not be linked to service providers.

**107) Answer: C**

The correct answer is option (c). Here, the process in its entire context is discussed in which payer and payee are linked through e-RUPI. Therefore, 'beneficiaries' is the proper filler. 'Benefactor' is opposite in meaning. The words 'devises and legatees' are synonymous with our correct choice but they are unfit as per the usage.

**108) Answer: B**

The correct answer is option (b). Both the words 'assure and ensure' are commonly confused

words. But here 'assure' is suitable as it is making something certain about the happening of a future incident beforehand. The word 'features' would be redundant as the sentence itself is talking about a feature of e-RUPI. Option (d) is contextually misfit.

**109) Answer: C**

The correct answer is option c. 'Intermediaries' is subsided as it is plural. 'Mediation' implies a process, a verb, which is not needed here. Here, 'arbiter' also does not make any sense as its meaning is related with property dealings. 'Intermediary' is the best choice as 'without involvement of the middlemen is what the line means.

**110) Answer: D**

Only these names in option (d) find a mention in the passage.

**111) Answer: C**

The money collected by the rebels through extortions is between 20-25 crore - which is a correct statement, therefore option (a) is ruled out. Option (b) is also factually correct as stated by the Governor, therefore this too is ruled out. Option (d) and (e) are also factually wholly correct. Option (c) is not wholly correct as it is only in Manipur and Nagaland and not all the

## SBI Clerk Mains 2020 Memory Based Paper – English Version

states or north east, where the insurgents claim to be running parallel governments. Therefore option (c) is the right answer.

### 112) Answer: C

The author has given examples as to how the NE states have been run over by insurgents and how the government has failed to curb its menaces. This has led to their increasing alienation from the rest of India. In this light, only option (c) completely fits.

### 113) Answer: D

"It is an open secret. There is a parallel government running in Manipur - because **people are not getting what they expected of the government,**" said L.M. Ngaranmi.

The above lines in the passage give a very clear answer to the question. It says people are not getting what they expected. This makes it evident that all other options don't need to be considered.

### 114) Answer: A

The second last paragraph of the passage beautifully explains that the vehicles carrying goods are not allowed to cross the border and hence the ones who are selling these goods are adding the price they pay as extortion to the goods. This makes the goods expensive in the market.

Option (a) encapsulates the same idea very well.

### 115) Answer: B

Looking at the options, tortured and pressurized are pretty much the same as both these options mean forcing or compelling someone to do a work they don't wish to do voluntarily. They don't fit the context.

'Decreed' and 'Dictated' are also similar options that mean commanding or officially mandating something. If two options are similar, ideally both should be eliminated.

"Summoned" which means to call to be present in front of an authority will fit the blank as the context is trying to convey the same.

### 116) Answer: D

Option (a) is correct. Option (b) is correct. Wind up means to arrange in order. Option (c) is correct. Wind down means to relax. Option (d) is incorrect. Between wind and water is an idiom which means to be in a vulnerable or precarious spot. So, by taking precaution one will not be between wind and water. Option (e) is correct. Wind in this sentence signifies to wrap around.

### 117) Answer: B

Option (a) is correct. Bow means to bend. Option (b) is incorrect. Bow means to resign; hence seeking further extension is in contradiction with the idiom bow out. Option (c)

## SBI Clerk Mains 2020 Memory Based Paper – English Version

is correct. Option (d) is correct. Bow him down means to overburden. Option (e) is correct. Making one's bow means to appear publicly for the first time as an artist.

**118) Answer: A**

The word beleaguer means harass, besiege or attack. Option (a) is incorrect as the right word to use would be exculpated or cleared from blame. When the real criminal confessed Jasmine should not have been harassed for the crime.

**119) Answer: A**

The word Recondite means abstruse, profound, secret, and hard to understand. Option (a) is incorrect as recondite is used to express

something that is hard to understand. Its use as the literal meaning of "hard to understand" is inappropriate.

**120) Answer: B**

The word impervious means not allowing anything to pass through; impenetrable. Option (b) is incorrect as impetuous would be correct to use. It means extremely impatient or impulsive.

## Special Bundle PDF Course for SBI Clerk & IBPS RRB PO Mains Exams 2021

Course Duration: **50 days**  
No. of Ques: **5000**



- ✓ Language: English & Hindi
- ✓ Exact Exam Level Questions
- ✓ Purely Based on Exact Exam Level & New Pattern
- ✓ Answer key with Video Solution

~~₹799~~

**₹399**

**Buy Now**

## Grand Bundle PDF Course 2021

### Exams Covered:

**SBI Clerk | SBI PO | IBPS RRB PO |  
IBPS RRB Clerk | IBPS PO | IBPS Clerk**

### Seperate PDF Course for All Major Bank pre + Mains Exams

- Total No. of Ques: **40,000+**
- Question in Bilingual (Eng & Hindi)
- Answers With Detailed **Video Solution**
- Provides you **50 days Study Planner** for each exams
- **Covers All Types** of Questions in Each Topic
- Questions in **Exact Exam Level**
- All Our PDFs are **Downloadable**
- **100% Satisfaction** Assured & It's Worthy for your money
- Download as PDF & also take **Quiz with Timer**